

# **BlueBird**

INDUSTRIES INC.

AIR, WATER,  
PRESSURE WASHING,  
FUEL TRANSFER

HOSES, HOSE REELS  
& ACCESSORIES

[www.blubirdindustries.com](http://www.blubirdindustries.com)





Less Clutter. More Efficiency  
**Better results.**



# About BluBird Industries

For over 30 years, BluBird Industries has set the standard in premium hoses and auto-retractable metal hose reels. No one else in the world manufactures both reels and hoses, ensuring out-of-the-box, ready-to-go quality, all under one roof. We power the toughest industries in the world—automotive, industrial, construction, agriculture, and beyond—backed by superior quality, bold innovation, and competitive pricing. That’s why top distributors and retailers across the U.S., Europe, Asia, and Australia trust BluBird. Our lineup: Air hoses & reels built for heavy-duty performance. Water hoses & reels tough enough for farms, shops, and homes High-pressure power-wash hoses & reels ready for any cleaning job From farmers to contractors, mechanics to homeowners—BluBird builds tools that make hard work easier.



**BluBird**





# Table of Content

Page No.

## AIR

Air Hoses .....	9-23
Air Hose Reels .....	24-28
Air Accessories .....	29-32
Jack-Hammer Air Hoses .....	32-34
Jack-Hammer Air Hose Reel .....	35
Mounting Plates & Swivel Mounts .....	36-37

## WATER

Water Hoses .....	38-46
Water Hose Reels .....	47-49
Mounting Plates & Swivel Mounts .....	50
Water Accessoreis .....	51-55

## PRESSURE WASHING

Pressure Washing Hoses .....	56-62
Pressure Washer .....	63-64
Pressure Washing Hose Reels .....	65-68
Mounting Plates & Swivel Mounts .....	69-70
Pressure Washing Accessoreis .....	71-79

## Fuel Transfer

Fuel Transfer Hoses .....	80-81
Fuel Transfer Hose Reel .....	82
Mounting Plates & Swivel Mounts .....	83

## MATERIAL HANDLING

Rapid Ties .....	85
Reel Stand .....	86
Wheel Chocks .....	87
Work Gear .....	88-89

## Replacement Parts

Brass Parts and Swivels Reels .....	90
Lock Pawl & Spring Reels .....	90
Roller Plate Assembly Reels .....	90
Hose Reel Stopper .....	90



# Bestsellers



## BluBird Rubber Air Hose

BluBird Rubber Air Hoses are 40% lighter than standard rubber hoses, yet built tough, with 100% EPDM rubber construction, solid brass fittings, and high-strength polyester reinforcement.

Go To Page No.9  
For more details



## OilShield Rubber Air Hose Reel

The OilShield Air Hose Reel combines a powder-coated 18ga of steel body, dual-arm stability, and a 12-point ratchet system, for smooth, controlled hose management. Equipped with the award-winning OilShield hose, which is 30% lighter than standard rubber hoses.

Go To Page No.26  
For more details



## AG-Lite Rubber Water Hose

Able to handle over 200°F, the AG-Lite 100% Rubber Water Hose is considered the best-in-class. This proprietary blend of EPDM and natural rubber ensures efficient and dependable water delivery and is the most reliable solution for all your watering needs.

Go To Page No.38  
For more details



## AG-Lite Rubber Water Hose Reel

AG-Lite Water Hose Reels deliver best-in-class performance with 18ga steel construction and 12pt. ratchet & heavy duty steel spring. The design ensures durability, keeping your AG-Lite 100% Rubber Water Hose organized, protected, and ready for use.

Go To Page No.46  
For more details



## HumpBack Pressure Washer

The portable HumpBack Pressure Washer delivers premium performance with a powerful 3000 PSI motor. Designed with an all-in-one self retracting reel system, it keeps your hose and accessories organized while ensuring reliable, high-pressure cleaning every time.

Go To Page No.64  
For more details



## Tough-Tek Pressure Washer Hose

Tough-Tek Pressure Washer Hoses are built for maximum durability and performance. Made from the lightest, 100% rubber, high-strength design, they deliver reliable, consistent pressure while remaining flexible and easy to handle.

Go To Page No.61  
For more details





Model#	SKU#	Description	Price
PWRT008	10010081	Pressure Washing Robot	Call For Pricing



# New Product Launch

INTRODUCING THE REVOLUTIONARY  
**HUMPBACK 3000**  
BluShield

## PRESSURE WASHING COMPLETE SET UP



3000 PSI



Portable  
Design



50 feet Pressure Hose on  
Auto-Retractable Reel

Includes Everything You Need To Get Started

**1.5**  
GPM

**120v**  
Electric Motor

**3000**  
PSI

**1** Year  
Warranty



Go To Page No.64  
For more details



## JROD PRESSURE WASHER NOZZLE

- Universal Quick-Connect Compatibility
- 4-In-1 Nozzle System
- Time-Saving Efficiency
- Durable Stainless Steel Construction
- Optimized for Downstream Injection
- Versatile Cleaning Applications
- Balanced Pressure Control
- Professional-Grade Performance



Go To Page No.79  
For more details



## U-BLOX

- U-BLoX UB3812 – Increase Pressure Outlets with a Secure, High-Performance Connection
- Connects 3/8" & 1/2" Hoses
- Heavy-Duty Aluminum Build
- 6,000 PSI Working / 24,000 PSI Burst
- 48-Hour Leak-Tested
- Compact & Lightweight
- Fits 3/8" & 1/2" NPT Fittings
- Steady Flow & Pressure
- 1-Year Limited Warranty



Go To Page No.79  
For more details



# New Product Launch



## AIR HOSE REEL



The FreeStyle  
Adjustable Arm



SshhTek  
Technology



5X  
SLOW  
Slow Rewind  
Technology



### Additional Accessories Included

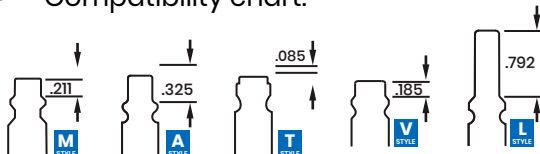


Go To Page No.23-24  
For more details

## 5in1 <sup>1/4</sup>-IN. UNIVERSAL SAFETY COUPLER

### 5-in-1 Universal Coupler

- Inbuilt Safety Mechanism
- Durable Corrosion-Resistant Construction
- 250 PSI Maximum Pressure Rating
- Ergonomic Knurled Grip
- Quick-Release System
- Compatibility chart:



Go To Page No.31  
For more details



## AIR BLOW GUN KITS

- High-Pressure Cleaning (170 PSI)
- Ergonomic Push-Button Design
- Noise Control Technology
- Durable Rubber and Aluminum Construction
- Compact and Portable Design
- Versatile Cleaning
- Lightweight and Easy to Use



Go To Page No.29 - 30  
For more details



# New Product Launch

**HiViZ**  
HG-LITE

## RUBBER WATER HOSE

- High-Viz Color To Prevent Tripping Hazards
- 40% Lighter than standard rubber water hoses
- 100% Rubber
- Handles Hot Water Up To 212°F
- Flexible From -40° Up To +190°F
- 500 PSI Burst Pressure
- 360° Swivel Grip
- Heavy-Duty Construction
- High-Pressure Rating
- Leak-Proof Connectors



Go To Page No.39  
For more details

**HiViZ**  
HG-LITE

## HYBRID WATER HOSE

- High-Viz Color To Prevent Tripping Hazards
- 40% Lighter than rubber water hoses
- Flexible From -20° Up To +160°F
- 500 PSI Burst Pressure
- 360° Swivel Grip
- Heavy-Duty Construction
- High-Pressure Rating
- Leak-Proof Connectors



Go To Page No.41  
For more details

**AVAGARD**

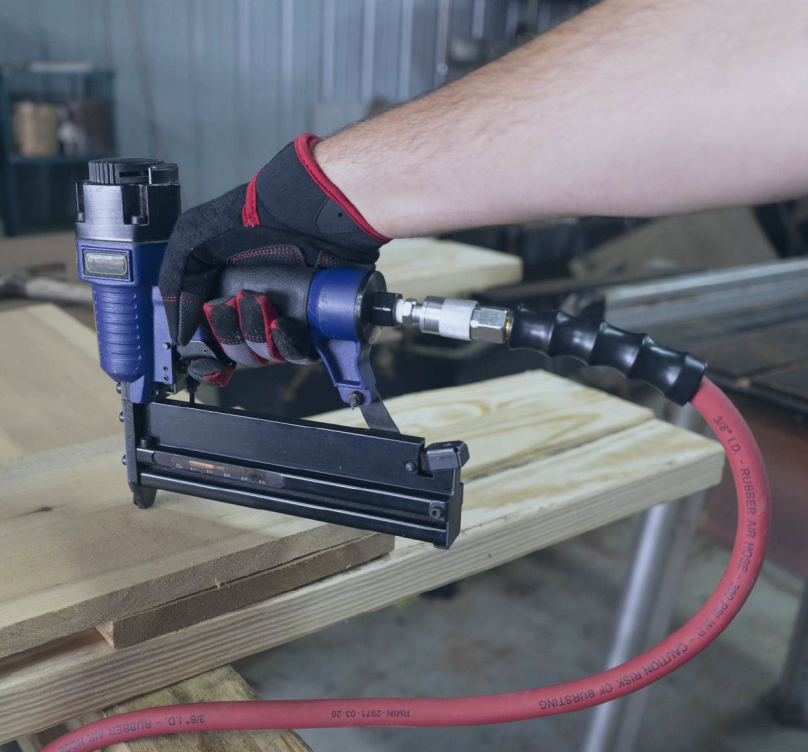
## FARM & RANCH HOSE

- 500 PSI Burst Pressure
- Built For Farm, Ranch & Construction Use
- Ultra-Flexible, Kink & Crush Resistant
- Reinforced With High-Strength Polyester
- Crush-Proof Couplings
- UV & Ozone Resistant
- 4-Finger Grip Bend Restrictor



Go To Page No.42  
For more details





**AIR**







Heavy Duty Rubber Air Hose

Features

- 40% Lighter
- 100% Rubber
- Ozone resistant & Abrasion resistant
- Kink resistant
- 4-Finger grip bend restrictor

Limited Lifetime Warranty



Flexible from  
-50°F to 190°F

4:1

Safety Factor

1200

PSI Burst Pressure

300

PSI Working Pressure

Why Choose It?

- Work Easier – 40% lighter for faster, strain-free use
- Stay Productive – Flexible from -50 °F to +190 °F
- Save Money – EPDM rubber resists cracks, kinks, and wear
- Get Full Power – Brass fittings keep tools at peak PSI
- Trust Your Gear – 10-year warranty for lasting confidence
- Shop, garage, or jobsite-BluBird delivers durability and ease that keeps you



SCAN FOR VIDEO



Model#	SKU#	Description	I.D.	Length	Fittings
BB1425	10010315	BluBird Rubber Air Hose Assembly 1/4" x 25'	1/4"	25'	2 x 1/4" Male NPT
BB1450	10010322	BluBird Rubber Air Hose Assembly 1/4" x 50'	1/4"	50'	2 x 1/4" Male NPT
BB14100	10010310	BluBird Rubber Air Hose Assembly 1/4" x 100'	1/4"	100'	2 x 1/4" Male NPT
BB3810	10010350	BluBird Rubber Air Hose Assembly 3/8" x 10'	3/8"	10'	2 x 1/4" Male NPT
BB3815	10010358	BluBird Rubber Air Hose Assembly 3/8" x 15'	3/8"	15'	2 x 3/8" Male NPT with 1/4" Reducers
BB3825	10010361	BluBird Rubber Air Hose Assembly 3/8" x 25'	3/8"	25'	2 x 3/8" Male NPT with 1/4" Reducers
BB3850	10010374	BluBird Rubber Air Hose Assembly 3/8" x 50'	3/8"	50'	2 x 3/8" Male NPT with 1/4" Reducers
BB38100	10010352	BluBird Rubber Air Hose Assembly 3/8" x 100'	3/8"	100'	2 x 3/8" Male NPT with 1/4" Reducers
BB1210	10010276	BluBird Rubber Air Hose Assembly 1/2" x 10'	1/2"	10'	2 x 3/8" Male NPT with 1/4" Reducers
BB1215	10010281	BluBird Rubber Air Hose Assembly 1/2" x 15'	1/2"	15'	2 x 3/8" Male NPT with 1/4" Reducers
BB1225	10010283	BluBird Rubber Air Hose Assembly 1/2" x 25'	1/2"	25'	2 x 1/2" Male NPT with 3/8" Reducers
BB1250	10010290	BluBird Rubber Air Hose Assembly 1/2" x 50'	1/2"	50'	2 x 1/2" Male NPT with 3/8" Reducers
BB12100	10010277	BluBird Rubber Air Hose Assembly 1/2" x 100'	1/2"	100'	2 x 1/2" Male NPT with 3/8" Reducers

Extensions Hoses

BBSR3805	10010545	BluBird Rubber Air Hose Whip / Snubber 3/8" x 5'	3/8"	5'	2 x 1/4" Male NPT
BBLD1203	10010422	BluBird Rubber Air Hose Lead In 1/2" x 3'	1/2"	3'	2 x 3/8" Male NPT with 1/4" Reducers

Twin Packs

BBSR3805-2pk	10015608	BluBird Rubber Air Hose Whip / Snubber 3/8" x 5'	3/8"	5'	2 x 1/4" Male NPT
BBLD1203-2pk	10015606	BluBird Rubber Air Hose Lead In 1/2" x 3'	1/2"	3'	2 x 3/8" Male NPT with 1/4" Reducers
BB3810-2pk	10015604	BluBird Rubber Air Hose Assembly 3/8" x 10'	3/8"	10'	2 x 1/4" Male NPT
BB3815-2pk	10015605	BluBird Rubber Air Hose Assembly 3/8" x 15'	3/8"	15'	2 x 3/8" Male NPT with 1/4" Reducers
BB1210-2pk	10015602	BluBird Rubber Air Hose Assembly 1/2" x 10'	1/2"	10'	2 x 3/8" Male NPT with 1/4" Reducers
BB1215-2pk	10015603	BluBird Rubber Air Hose Assembly 1/2" x 15'	1/2"	15'	2 x 3/8" Male NPT with 1/4" Reducers

FAQs

Q. Will this hose replace my old heavy one without losing performance?

A: Yes-BluBird is 40% lighter but still rated to 300 PSI for full tool power.

Q. Can I leave it in my truck year-round?

A: Absolutely-stays flexible in -50 °F winters and 190 °F summers without cracking.

Q. Is this a good fit for a professional shop?

A: Yes-built for daily, heavy use with abrasion- and ozone-re-sistance plus brass fittings

Q. What makes it a safer choice?

A: It's tested to a 4:1 safety factor and backed by a 10-year warranty for peace of mind.

Q. Does it tangle or kink like other hoses?

A: No-the EPDM rubber and reinforced braid keep it kink- and twist-resistant.





NEW  
PRODUCT



Heavy Duty Rubber Air Hose  
with 5-IN-1 Coupler

Features

- 40% Lighter
- 100% Rubber
- Ozone resistant & Abrasion resistant
- Kink resistant
- 4-Finger grip bend restrictor

Limited Lifetime Warranty

Flexible  
from  
-50°F to 190°F

4:1  
Safety  
Factor

1200  
PSI Burst  
Pressure

300  
PSI Working  
Pressure

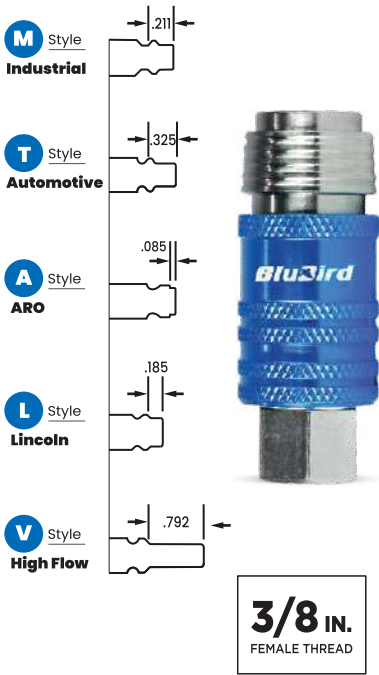


Why Choose It?

- Universal 5-in-1 coupler fits all major plug types (M, T, A, L, V)
- Quick connect for fast, secure, leak-free hose connections
- Safety bleed-off reduces hose whip by releasing excess air
- Heavy-duty steel build for durability and long life
- Ergonomic grip for comfort and control
- One coupler for multiple setups, no need for extras on job sites

Comes with  
**5-IN-1**  
COUPLER

This Coupler Accepts all  
5 Interchange Fittings



Model#	SKU#	Description	I.D.	Length	Fittings
BB3850-5CP	10014633	BluBird Rubber Air Hose 3/8" X 50'- Blue with 5 in 1 Coupler	3/8"	50'	2 x 3/8" Male NPT

FAQs

**Q. What makes this combo unique?**  
A: Includes a BluBird EPDM rubber hose with a universal 5-in-1 safety coupler-ready to use right away.

**Q. What does the 5-in-1 coupler do?**  
A: Connects to M, V, A, T, and L plugs-no adapters needed.

**Q: Is it safer than a standard coupler?**  
A: Yes-built in pressure bleed-off stops dangerous hose whip on disconnect.

**Q. How does it perform?**  
A: Rated to 300 PSI, with solid brass ends for leak-free power.

**Q. Is it easy to handle?**  
A: Yes-hose is 40% lighter than standard rubber and stays flexible in any season.





Heavy Duty Rubber Air Hose With Wrapped Finish

Features

- 40% Lighter
- 100% Rubber
- Ozone resistant & Abrasion resistant
- Kink resistant
- 4-Finger grip bend restrictor

Limited Lifetime Warranty

Flexible from -50°F to 190°F

4:1 Safety Factor

1200 PSI Burst Pressure

300 PSI Working Pressure

Why Choose It?

- 40% lighter for faster, strain-free use
- Flexible from -50 °F to +190 °F
- 100% EPDM premium rubber
- Brass fittings keep tools at peak PSI
- 10-year warranty



Model#	SKU#	Description	I.D.	Length	Fittings
BBPRO3415	10010436	BluBird Pro Rubber Air Hose Assembly 3/4" x 15'	3/4"	15'	2 x 3/4" MNPT
BBPRO3425	10010438	BluBird Pro Rubber Air Hose Assembly 3/4" x 25'	3/4"	25'	2 x 3/4" MNPT
BBPRO3450	10010439	BluBird Pro Rubber Air Hose Assembly 3/4" x 50'	3/4"	50'	2 x 3/4" MNPT
BBPRO34100	10010435	BluBird Pro Rubber Air Hose Assembly 3/4" x 100'	3/4"	100'	2 x 3/4" MNPT
BBPRO34300	10012885	BluBird Pro Rubber Air Hose Bulk 3/4" x 300'	3/4"	300'	2 x 3/4" MNPT
BBPROONE300	10012886	BluBird Pro Rubber Air Hose Bulk 1" x 300'	1"	300'	2 x 3/4" MNPT



FAQs

- Q. How does the 40% lighter premium rubber build affect jobsite handling and speed?**  
A: Being a large, 3/4" hose, the 40% lighter aspect is meaningful. It dramatically reduces user fatigue and streamlines hose placement and coiling for faster workflows.
- Q. What do the solid brass fittings and polyester reinforcement mean for jobsite durability and uptime?**  
A: Precision-machined solid brass fittings provide leak-free, corrosion-resistant connections, while the high-strength polyester braided reinforcement withstands working pressures, ensuring tools run dependably.

- Q. How does exceptional flexibility and resistance to ozone and abrasion benefit real-world use?**  
A: With flexibility from -50°F to +190°F, this hose maintains reliable airflow and avoids kinks—helping workers avoid delays and work efficiently in all seasons.
- Q. Is the hose durable enough to resist cuts?**  
A: The High-strength polyester woven braided reinforcement adds structural integrity, while the heavy-duty wrapped outer cover further enhances abrasion and cut resistance on the hose exterior.





Air Compressor Kit

Features

- 40% Lighter
- 100% Rubber
- Ozone resistant & Abrasion resistant
- Kink resistant
- 4-Finger grip bend restrictor

Limited Lifetime Warranty

Flexible from -50°F to 190°F

4:1

Safety Factor

1200

PSI Burst Pressure

300

PSI Working Pressure

Why Choose It?

- Lightweight 40 % lighter hose for easier use
- Flexible, strong rubber resists wear, bends, ozone, abrasion, and kinks
- Pro-grade brass fittings deliver peak PSI, corrosion resistance, and leak-free connections
- Ready-to-go kit with hose, fittings, tools, and carry bag for instant use



SCAN FOR VIDEO



Kit Includes:

- 1 x BluBird Air Hose for pneumatic or air tools
  - 1 x Safety Blow Gun
  - 1 x Tire Gauge
  - 1 x Air Chuck
  - 3 x Male Plugs Industrial Style 1/4" NPT
- 2 x Female Plugs Industrial Style 1/4" NPT.
  - 1 x Male Coupler Industrial Style 1/4" NPT.
  - 1 x Female Coupler Industrial Style 1/4" NPT.
  - 1 x Teflon tape.
  - 1 x Carry bag for easy storage after every use.

Model#	SKU#	Description	I.D.	Length	Fittings
BB3825KIT-10	10010368	BluBird Rubber Air Hose 3/8" x 25' w/ 13pc Brass Kit	3/8"	25'	2 x 1/4" Male NPT
BB3850KIT-10	10010385	BluBird Rubber Air Hose 3/8" x 50' w/ 13pc Brass Kit	3/8"	50'	2 x 1/4" Male NPT



FAQs

- Q. Why is this kit perfect for DIYers working around the home or garage?**  
A: This kit includes a premium lightweight rubber hose and ten carefully selected brass accessories, making tire inflation, air tool use, and general home jobs fast and frustration-free.
- Q. How do the included Tire Gauge and Safety Blow Gun simplify everyday maintenance and safety?**  
A: The Tire Gauge allows quick, accurate tire pressure checks, while the Safety Blow Gun lets users safely clean work areas or equipment, helping you keep everything running optimally.

- Q. What makes this kit easier and faster to use compared to buying individual air hose accessories?**  
A: Every tool in the kit is thoughtfully included for the most common tasks, and the reusable carry bag keeps everything organized and ready—saving time by ensuring that the right fitting or accessory is always on hand for any job.
- Q. Does this hose maintain flexibility and air flow in fluctuating temperatures found in construction zones?**  
A: Even in varying temperatures, the premium rubber ensures the hose remains flexible and maintains optimal air flow.





Fleet Edition Tire Inflator Kit

Features

- 40% Lighter
- 100% Rubber
- Ozone resistant & Abrasion resistant
- Kink resistant
- 4-Finger grip bend restrictor

Limited Lifetime Warranty

Flexible  
from  
-50°F to 190°F

4:1  
Safety  
Factor

1200  
PSI Burst  
Pressure

300  
PSI Working  
Pressure

Why Choose It?

- Complete fleet kit with 50 ft BluBird lead-in hose
- Made in USA Phillips aluminum glad hand for durability
- Dual foot chuck inflator for easy tire service
- Teflon tape included for secure connections
- Carry bag keeps tools organized and ready to use



SCAN FOR  
VIDEO



Kit Includes:

- 50Ft. BluBird lead-in air hose
- Made in USA Phillips Heavy Duty Aluminium Universal Glad Hand
- Dual foot Chuck Inflator
- Teflon tape
- Carry bag for easy storage after every use.

Model#	SKU#	Description	I.D.	Length	Fittings
BBFLT3850	10010387	BluBird Rubber Air Hose 3/8" x 50' w/ Fleet Edition	3/8"	50'	2 x 1/4" Male NPT







# The Perfect Shop Hose



## RMA Class A Oil Resistant Rubber Air Hose

### Features

- 30% Lighter | 100% Rubber
- Ozone resistant & Abrasion resistant
- Kink resistant
- 4-Finger grip bend restrictor

### Limited Lifetime Warranty

Flexible from -30°F to 190°F

**300**  
PSI Working Pressure

**1200**  
PSI Burst Pressure

**4:1**  
Safety Factor

## Why Choose It?

- Industry-leading oil resistance for durability in auto, industrial, and workshop use
- Long service life under oils, solvents, and harsh chemicals
- Built for professionals using pneumatic tools
- Low-maintenance design resists cracks, hardening, and wear
- Trusted BluBird engineering for tough job sites



SCAN FOR VIDEO



Model#	SKU#	Description	I.D.	Length	Fittings
OS3825	10011086	Oilshield Rubber Air Hose Assembly 3/8" x 25'	3/8"	25'	2 x 3/8" Male NPT 1/4" Reducers
OS3835	10011088	Oilshield Rubber Air Hose Assembly 3/8" x 35'	3/8"	35'	2 x 3/8" Male NPT 1/4" Reducers
OS3850	10011089	Oilshield Rubber Air Hose Assembly 3/8" x 50'	3/8"	50'	2 x 3/8" Male NPT 1/4" Reducers
OS38100	10011083	Oilshield Rubber Air Hose Assembly 3/8" x 100'	3/8"	100'	2 x 3/8" Male NPT 1/4" Reducers
OS1250	10011065	Oilshield Rubber Air Hose Assembly 3/8" x 50'	1/2"	50'	2 x 1/2" Male NPT with 3/8" Reducer
OS12100	10011055	Oilshield Rubber Air Hose Assembly 3/8" x 100'	1/2"	100'	2 x 1/2" Male NPT with 3/8" Reducer
OS3815-2pk	10015610	Rubber Air Hose Assembly 3/8" x 15'	3/8"	15'	2 x 3/8" Male NPT 1/4" Reducers

### Extensions Hoses

OS3810	10011082	Oilshield Rubber Air Hose 3/8" x 10'	3/8"	10'	2 x 3/8" Male NPT
OS3815	10011085	Oilshield Rubber Air Hose 3/8" x 15'	3/8"	15'	2 x 3/8" Male NPT
OSSR3805-2pk	10015615	Rubber Air Hose Assembly 3/8" x 05'	3/8"	5'	2 x 3/8" Male NPT



## FAQs

**Q. How does the RMA Class A oil resistance rating make shop work easier and safer?**

A: The hose's nitrile core and cover deliver maximum oil resistance, so workers can use it confidently around oils, fuel, and cleaning agents without worry.

**Q. What safety and durability features are built into the OilShield air hose?**

A: OilShield is rated for a 300 PSI working pressure, with a robust 4:1 safety factor and high-strength polyester woven reinforcement to prevent sudden failures. Its brass fittings won't rust, and the hose is resistant to abrasions, kinks, ozone, and sparks for reliable, safe operation.

**Q. How do the solid brass fittings and resistance to welding spatter add value for industrial jobsites?**

A: The corrosion-resistant solid brass fittings offer secure, leak-free air connections, while the hose's ability to resist welding sparks and grinding spatter ensures reliability and safety.

**Does OilShield remain flexible and easy to use in tough environments?**

A: Yes, OilShield offers flexible operation from -30°F to +190°F and features a kink-resistant and lay-flat design, making it easy to coil, uncoil, and use—even in cold storage, hot garages, or high-wear commercial settings.





## The Perfect Shop Hose



**NEW  
PRODUCT**



## RMA Class A Oil Resistant Rubber Air Hose with 5-in-1 Coupler

### Features

- 30% Lighter | 100% Rubber
- Ozone resistant & Abrasion resistant
- Kink resistant
- 4-Finger grip bend restrictor

### Limited Lifetime Warranty



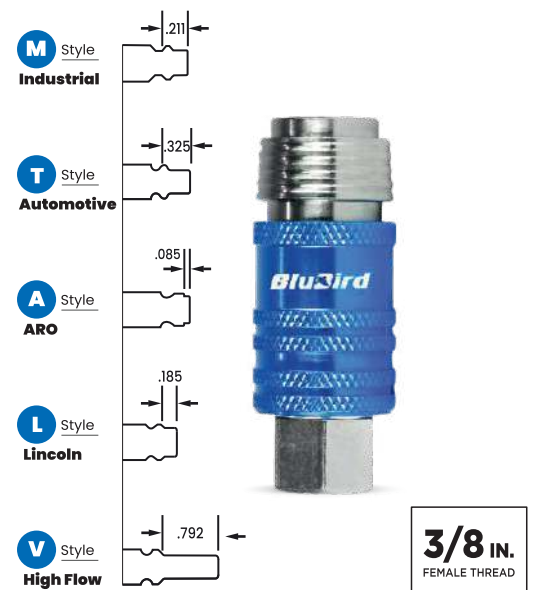
## Why Choose It?

- Universal 5-in-1 coupler fits all major plug types (M, T, A, L, V)
- Quick connect for fast, secure, leak-free hose connections
- Safety bleed-off reduces hose whip by releasing excess air
- Heavy-duty steel build for durability and long life
- Ergonomic grip for comfort and control
- One coupler for multiple setups, no need for extras on job sites



## Comes with **5-IN-1** COUPLER

## This Coupler Accepts all 5 Interchange Fittings



Model#	SKU#	Description	I.D.	Length	Fittings
OS3850-5CP	10015212	Oilshield Rubber Air Hose 3/8" x 50'-Yellow with 5 in 1 coupler	3/8"	50'	2 x 3/8" Male NPT

## FAQs

**Q. How does the 5-in-1 coupler speed up switching out tools?**  
A: The universal threading eliminates the need for adapters, allowing workers to change setups rapidly.

**Q. How does it promote a safer, neater workspace?**  
A: Secure snaps and easy disconnects minimize air leaks and loose parts, helping keep work areas organized and safe.

**Q. Is this hose compatible with most common air tools used in automotive repair?**  
A: Yes, this product is designed to work with air tools such as impact wrenches, ratchets, and paint sprayers.

**Q. Why are heavy-duty materials important for industrial couplers?**  
A: Solid brass and steel resist high pressure and impact, giving workers security and extending coupler longevity.





## Heavy Duty Rubber Air Hose

### Features

- 20% Lighter
- 100% Rubber
- Ozone resistant & Abrasion resistant
- Kink resistant
- 4-Finger grip bend restrictor

### Limited Lifetime Warranty

Flexible  
from  
-40°F to 190°F

300

PSI Working Pressure

1200

PSI Burst Pressure

## Why Choose It?

- Easier handling and reduced fatigue
- Flexible and stronger than traditional rubber for improved maneuverability
- Solid brass fittings resist corrosion and outlast aluminum
- Built to withstand extreme temperatures
- High-strength braided reinforcement ensures durability in tough conditions



Model#	SKU#	Description	I.D.	Length	Fittings
AVG1250	10010070	Avagard 1/2" x 50' Rubber Air Hose	1/2"	50'	2 x 3/8" Male NPT with 3/8" Reducer
AVG3835	10012667	Avagard Rubber Air Hose Assembly 1/2" x 50'	3/8"	35'	2 x 3/8" NPT with 1/4" Reducers



## FAQs

- Q. Is the hose durable enough to resist cuts, abrasions, and punctures in industrial settings?

A: The reinforced structure of this hose protects against cuts and abrasions, making it suitable for tough industrial environments.
- Q. Does this hose perform well under frequent coiling and uncoiling in garage environments?

A: Designed for flexibility, this hose maintains performance and avoids kinking or cracking even after repeated coiling in demanding garage settings.

- Q. How does Avagard enhance worker safety and hose lifespan?

A: The hose features abrasion, ozone, and kink resistance—along with a four-finger bend restrictor which prevents damage near fittings—helping prevent sudden failures, tripping hazards, and extending the overall working life of the hose.
- Q. Does this hose maintain flexibility and air flow in fluctuating temperatures found in construction zones?

A: Even in varying temperatures, the premium rubber ensures the hose remains flexible and maintains optimal air flow.





Heavy Duty Rubber Air Hose

Features

- 20% Lighter
- 100% Rubber
- Ozone resistant & Abrasion resistant
- Kink resistant
- 4-Finger grip bend restrictor

Limited Lifetime Warranty



Flexible from  
-40°F to 190°F

300

PSI Working Pressure

1200

PSI Burst Pressure



Why Choose It?

- Easier handling and reduced fatigue
- Flexible and stronger than traditional rubber for improved maneuverability
- Solid brass fittings resist corrosion and outlast aluminum
- Built to withstand extreme temperatures
- High-strength braided reinforcement ensures durability in tough conditions



Model#	SKU#	Description	I.D.	Length	Fittings
WLEPRO1250	10011694	Dino-Hide Rubber Air Hose Assembly 3/8" X 50'	1/2"	50'	2 x 3/8" Male NPT with 3/8" Reducer
WLEPRO3850	10011689	Dino-Hide Rubber Air Hose Assembly 1/2" X 50'	3/8"	35'	2 x 3/8" NPT with 1/4" Reducers



FAQS

**Q.** How does the hose’s lightweight, wrapped rubber build improve daily workflow?  
**A:** The hose’s 100% rubber construction and advanced wrapped finish make it 20% lighter than standard hoses, reducing fatigue and making transport and setup quicker.

**Q.** What features deliver long-term durability and reliability for tools and workers?  
**A:** High-strength polyester woven braided reinforcement allows the hose to handle 300 PSI working pressure; abrasion, ozone, and kink resistance let teams use it confidently in harsh environments.

**Q.** How does the four-finger grip bend restrictor improve control and help prevent downtime?  
**A:** The 4-finger grip bend restrictor offers better handling and control, minimizing kinks and extending hose lifespan—so workers swap tools and maneuver air lines faster.

**Q.** Can this hose handle the demands of construction sites with heavy air tool usage?  
**A:** Specifically designed for rugged conditions, this hose performs reliably with air tools like nailers and compressors on construction sites.





## Avagard Hybrid Air Hose

### Features

- Made using Rubber/PVC Polymer
- High strength polyester woven braided reinforcement
- Solid Brass fittings are corrosion resistant
- 4 finger grip bend restrictor

### Limited Lifetime Warranty

Flexible from  
-40°F to 190°F

300

PSI Working Pressure

1200

PSI Burst Pressure

## Why Choose It?

- Hybrid build combines rubber strength with lightweight handling
- Ideal for outdoor, industrial, and chemical worksites
- All-weather performance in extreme hot or cold
- Flexible design reduces operator fatigue
- Professional grade for strength and long life



Model#	SKU#	Description	I.D.	Length	Fittings
AVGHY1425	10012873	Avagard Hybrid Air Hose Assembly 1/4" x 25'	1/4"	25'	1/4" NPT
AVGHY1450	10012874	Avagard Hybrid Air Hose Assembly 1/4" x 50'	1/4"	50'	1/4" NPT
AVGHY14100	10013162	Avagard Hybrid Air Hose Assembly 1/4" x 100'	1/4"	100'	1/4" NPT
AVGHY3850	10012877	Avagard Hybrid Air Hose Assembly 3/8" x 50'	3/8"	25'	3/8" NPT
AVGHY38100	10012875	Avagard Hybrid Air Hose Assembly 3/8" x 100'	3/8"	50'	3/8" NPT
AVGHY1225	10012871	Avagard Hybrid Air Hose Assembly 1/2" x 25'	1/2"	100'	1/2" NPT
AVGHY1250	10012872	Avagard Hybrid Air Hose Assembly 1/2" x 50'	1/2"	50'	1/2" NPT
AVGHY12100	10012870	Avagard Hybrid Air Hose Assembly 1/2" x 100'	1/2"	100'	1/2" NPT







## Heavy Duty PVC Air Hose

### Features

- 100% PVC construction
- High strength polyester woven braided reinforcement
- Solid Brass fittings are corrosion resistant
- 4 finger grip bend restrictor

### Limited Lifetime Warranty

Flexible from  
-10°F to 130°F

300

PSI Working Pressure

4:1

Safety Factor

## Why Choose It?

- Reinforced design built for tough jobs
- UV, ozone, and weather resistant for outdoor use
- Pro-grade fittings for secure connections
- Versatile across workshops and construction sites
- Low-maintenance durability for cost-effective use



Model#	SKU#	Description	I.D.	Length	Fittings
PV3850	10011272	Avagard PVC Air Hose 3/8" x 50' PVC Air Hose	3/8"	50'	2 x 1/4" Male NPT
PV38100	10011261	Avagard PVC Air Hose 3/8" x 100' PVC Air Hose	3/8"	100'	2 x 1/4" Male NPT



## FAQs

**Q. Does this hose perform well under frequent coiling and uncoiling in garage environments?**  
A: Designed for flexibility, this hose maintains performance and avoids kinking or cracking even after repeated coiling in demanding garage settings.

**Q. How does the lightweight construction of the PV3850 improve everyday workflow?**  
A: The hose's lightweight PVC design reduces strain on wrists and arms, allowing workers to maneuver and coil it freely.

**Q. What does the high-strength polyester reinforcement mean for real-world jobsite durability?**  
A: The built-in polyester spiral reinforcement enables the hose to withstand tough conditions, providing kink resistance and reducing downtime.

**Q. How do the premium brass fittings and bend restrictor promote safer, better compressed air usage?**  
A: Durable brass fittings guarantee leak-free connections, while the 4-finger grip bend restrictor gives users more hose control, preventing kinks and maintaining air flow.





PVC 9 Pc Air Hose Kit

Features

- 100% PVC construction
- High strength polyester woven braided reinforcement
- Solid Brass fittings
- 4 finger grip bend restrictor

Limited Lifetime Warranty

  
Flexible  
from  
-10°F to 130°F

**300**  
PSI Working  
Pressure

**4:1**  
Safety  
Factor

Why Choose It?

- All-in-one kit with hose and steel fittings
- Hose that's lighter, stronger, and more flexible than standard options
- High-pressure capable with robust braided reinforcement
- Includes essential compressor tools—blow gun, tire gauge, chuck, fittings—for instant use

  
**SCAN FOR  
VIDEO**

Kit Includes:

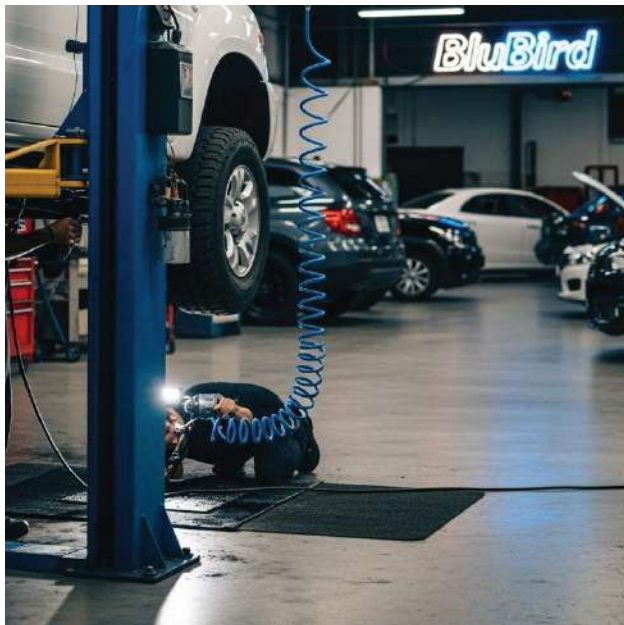
- Avagard PVC Air Hose
- Safety Blow Gun
- Tire Gauge
- Air Chuck
- Male Coupler Industrial Style 1/4" NPT
- Female Coupler Industrial Style 1/4" NPT
- Teflon Tape
- Female Plugs Industrial Style 1/4" NPT
- Male Plugs Industrial Style 1/4" NPT



Model#	SKU#	Description	I.D.	Length	Fittings
AVGPV3825KIT-9	10011268	Avagard PVC Air Hose Assembly 3/8" X 25' w/ 9 Pc Steel Accessory Kit	3/8"	25'	2 x 1/4" Male NPT







## Premium Poly Recoil Air Hose

### Features

- Retains self coiling properties
- 100% Polyurethane construction
- 120 PSI working pressure
- 3:1 Safety factor
- 1/4" Male NPT revolving end
- Solid Brass fittings are corrosion resistant
- Bend restrictor for better use & easier control over the hose

### Limited Lifetime Warranty

Flexible from  
-40°F to 165°F

**300**

PSI Working Pressure

**900**

PSI Burst Pressure

Model#	SKU#	Description	I.D.	Length	Fittings
AVGPUR1425	10011233	Avagard PU Braided Recoil Air Hose 1/4" X 25'	1/4"	25'	2 x 1/4" M-Revolving NPT



## Avagard Recoil Air Hose

### Features

- Retains self coiling properties
- 100% Polyurethane construction
- 125 PSI working pressure
- 3:1 Safety factor
- 1/4" Male NPT revolving end
- Solid Brass fittings are corrosion resistant
- Bend restrictor for better use & easier control over the hose

### Limited Lifetime Warranty

Flexible from  
-40°F to 100°F

**125**

PSI Working Pressure

**375**

PSI Burst Pressure

Model#	SKU#	Description	I.D.	Length	Fittings
AVGPUR3825	10011245	Avagard PU Recoil Air Hose Assembly 3/8" X 25'	1/4"	25'	3/8" Male-NPT

## FAQS

**Q. How does the recoil design make automotive or workshop setups more efficient?**

A: The recoil hose automatically self-retracts to a compact shape after use, keeping workspaces free of tangles.

**Q. What advantages does the polyurethane construction provide?**

A: Polyurethane makes this hose lighter and more flexible, reducing strain and making it easier to maneuver around vehicles.

**Q. How do solid brass fittings add value for DIYers and professional technicians?**

A: The corrosion-resistant solid brass fittings ensure a tight, leak-free seal for pneumatic tools, meaning less maintenance and reliable air flow.

**Q. In what ways does the hose's extreme temperature flexibility help workers throughout the year?**

A: By staying pliable from -40°F to +165°F, the hose delivers consistent performance whether in a cold morning or a hot engine bay, preventing interruptions and allowing year-round use.





Premium Poly Air Hose  
with FastFix Fittings

Features

- High strength polyester braided reinforcement
- Field repair and quick-connect fittings
- Solid Brass fittings are corrosion resistant
- Bend restrictor for better use & easier control over the hose

Limited Lifetime Warranty



Flexible from  
-45°F to 165°F

300

PSI Working Pressure

900

PSI Burst Pressure

Why Choose It?

- FastFix fittings for quick secure connections
- Reliable performance where precision matters
- Lightweight and tough to reduce fatigue
- Performs in extreme temperatures
- Pro-grade for commercial and heavy-duty use



Model#	SKU#	Description	I.D.	Length	Fittings
BBPU14100	10012751	BluBird Poly Air Hose Assembly 1/4" x 100'- FastFix	1/4"	25'	2 x 1/4" Male NPT FastFix + Coupler /Plug
BBPU1425	10012812	BluBird Poly Air Hose 1/4" X 25'-Blue-FastFix	1/4"	50'	2 x 1/4" Male NPT FastFix + Coupler /Plug
BBPU1450	10012750	BluBird Poly Air Hose Assembly 1/4" x 50'- FastFix	1/4"	100'	2 x 1/4" Male NPT FastFix + Coupler /Plug
BBPU38100	10012878	BluBird Poly Air Hose Assembly 3/8" x 100'	3/8"	50'	2 x 1/4" Male NPT FastFix
BBPU3850	10012880	BluBird Poly Air Hose Assembly 3/8" x 50'	3/8"	100'	2 x 1/4" Male NPT FastFix



FAQs

**Q.Will this hose and coupler fit my compressor and air tools?**  
 A: Yes—this assembly ships with standard 1/4" NPT ends, which is the most common thread in shops. The hose is 3/8" ID (50 ft) for better airflow, and the quick-connect coupler is designed to work with standard plugs. If your shop uses a different quick-connect profile, simply swap the coupler/plug to your house standard—no special tools needed. (Threads stay 1/4" NPT on the fittings.)

**Q. How does the Fast-Fix field-repairable fitting work—and what tools do I need?**  
 A: Fast-Fix lets you repair a cut or leak on the spot without crimp sleeves or a press. Just: Cut the damaged section square with a sharp blade. Slide the compression nut over the hose. Insert the repair barb fully into the hose. Tighten the nut with two wrenches until snug. That's it—back in service in minutes. Recommended tools: utility knife and two open-end wrenches.





## All-in-One Air Hose Reels

BluBird All-in-One Air Hose Reels combine durability, safety, and convenience in a single unit. Built with heavy-duty steel and a smooth auto-rewind system, they feature Shh-Tek technology for quiet operation, an adjustable guide arm for flexible mounting, and a slow rewind mechanism for added safety. Designed to protect and extend hose life, these reels deliver reliable, tangle-free performance for both professional and DIY use.

### Features

- 18 Gauge powder-coated steel construction
- 12-point ratchet system which helps lock out on the hose at shorter lengths
- Specialized internal system reduces the spring vibration, enables quieter

**FreeSTYLE**  
225° Adjustable

**shh-tek**  
Noise Free Technology

**5x Slow Retraction**

### Mounting Options



### Comes with:



**5-In-1 Coupler**



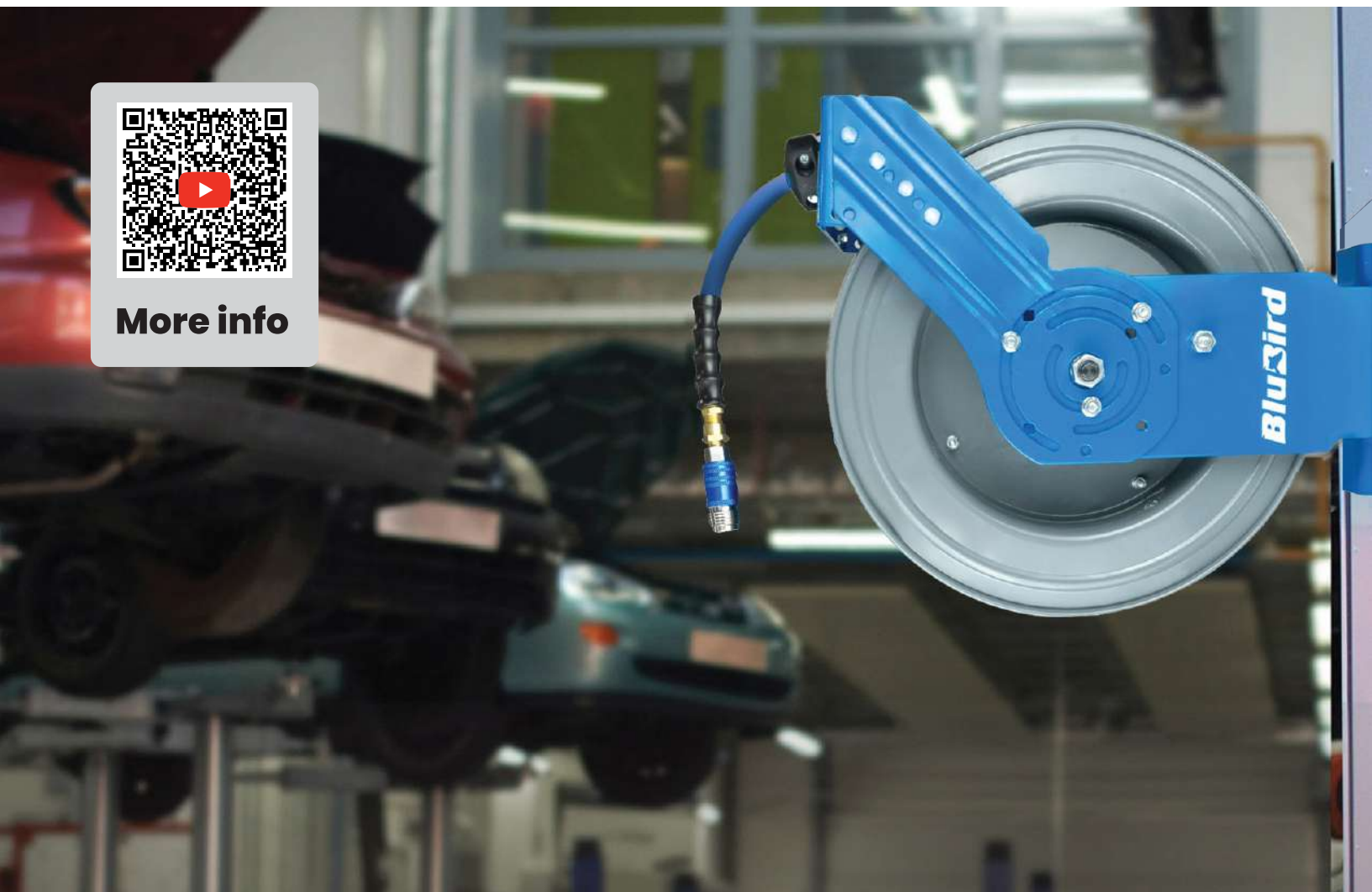
**1/2" Socket Wrench**



**180° Swivel Mount**



**More info**







**BluBird®**

## Single Arm Auto – Retractable Air Hose Reels

Model#	SKU#	Description	I.D.	Length	Fittings
BBRHD3850-AIO	10013148	BluBird Rubber All-In-One 3/8" X 50' Air Hose Single Arm	3/8"	50'	2 x 3/8" Male NPT with reducers



**BluBird®**

## Dual Arm Auto – Retractable Air Hose Reels

Model#	SKU#	Description	I.D.	Length	Fittings
BBRDA1250-AIO	10013150	BluBird Rubber All-In-One 1/2" X 50' Air Hose Dual Arm	1/2"	50'	2 x 1/2" Male NPT with reducers



**OIL SHIELD®**  
BluBird

## Single Arm Auto – Retractable Air Hose Reels

Model#	SKU#	Description	I.D.	Length	Fittings
OSRHD3850-AIO	10013152	OilShield Rubber All-In-One 3/8" X 50' Air Hose Single Arm	3/8"	50'	2 x 3/8" Male NPT with reducers



**OIL SHIELD®**  
BluBird

## Dual Arm Auto – Retractable Air Hose Reels

Model#	SKU#	Description	I.D.	Length	Fittings
OSRDA1250-AIO	10013154	OilShield Rubber All-In-One 1/2" X 50' Air Hose Dual Arm	1/2"	50'	2 x 1/2" Male NPT with reducers





# Auto- Retractable Air Hose Reels

The BluBird Air Hose Reel features a corrosion-resistant steel body, adjustable guide arm, and reinforced base for stability. A 12-point ratchet system, brass swivel joints, and non-sag rollers ensure smooth, leak-free performance with versatile mounting for professional or DIY use.

### Features

- 18 and 20 gauge powder-coated steel construction
- 12-point ratchet system which helps lock out on the hose at shorter lengths
- Specialized internal system reduces the spring vibration, enables quieter
- Includes Lead-in hose of relevant brand

### Mounting Options



## BluBird® Single Arm Auto – Retractable Air Hose Reels

Model#	SKU#	Description	I.D.	Length	Fittings
BBR3825	10010485	BluBird Retractable Rubber Air Hose Reel 3/8" x 25' w/ 3' Lead-in Hose	3/8"	25'	2 x 3/8" Male NPT with reducers
BBR3850	10010489	BluBird Retractable Rubber Air Hose Reel 3/8" x 50' w/ 3' Lead-In Hose	3/8"	50'	2 x 3/8" Male NPT with reducers
BBR1250	10010468	BluBird Retractable Rubber Air Hose Reel 1/2" x 50' w/ 3' Lead-In Hose	1/2"	50'	2 x 1/2" Male NPT with reducers





**BluBird®**  
**Heavy Duty Single Arm**  
**Auto – Retractable Air Hose Reels**

Model#	SKU#	Description	I.D.	Length	Fittings
BBRHD3875	10010518	BluBird Retractable Rubber Air Hose Reel 1/2" x 50' w/ 3' Lead-In Hose	1/2"	50'	2 x 3/8" Male NPT with reducers



**OIL SHIELD®**  
**Heavy Duty Single Arm**  
**Auto – Retractable Air Hose Reels**

Model#	SKU#	Description	I.D.	Length	Fittings
OSRHD3835	10011119	OilShield Retractable Rubber Air Hose Reel 3/8" X 35' w/ 3' Lead-In Hose	3/8"	35'	2 x 3/8" Male NPT with reducers
OSRHD3850	10011136	OilShield Retractable Rubber Air Hose Reel 3/8" X 50' w/ 3' Lead-In Hose	3/8"	50'	2 x 3/8" Male NPT with reducers
OSRHD3875	10011122	OilShield Retractable Rubber Air Hose Reel 3/8" X 75' w/ 3' Lead-In Hose	3/8"	75'	2 x 3/8" Male NPT with reducers
OSRHD1250	10011132	OilShield Retractable Rubber Air Hose Reel 1/2" X 50' w/ 3' Lead-In Hose	1/2"	50'	2 x 1/2" Male NPT with reducers



**BluBird®**  
**Heavy Duty Dual Arm**  
**Auto – Retractable Air Hose Reels**

Model#	SKU#	Description	I.D.	Length	Fittings
BBRDA3850	10010507	BluBird Retractable Rubber Air Hose Reel 3/8" X 50' w/ 3' Lead-In Hose	3/8"	50'	2 x 3/8" Male NPT with reducers
BBRDA38100	10010501	BluBird Retractable Rubber Air Hose Reel 3/8" X 100' w/ 3' Lead-In Hose	3/8"	100'	2 x 3/8" Male NPT with reducers
BBRDA1250	10010497	BluBird Retractable Rubber Air Hose Reel 1/2" X 50' w/ 3' Lead-In Hose	1/2"	50'	2 x 1/2" Male NPT with reducers
BBRDA12100	10010494	BluBird Retractable Rubber Air Hose Reel 1/2" X 100' w/ 3' Lead-In Hose	1/2"	100'	2 x 1/2" Male NPT with reducers
BBRDA3450	10010478	BluBird Retractable Rubber Air Hose Reel 3/4" X 50' w/ 3' Lead-In Hose	3/4"	50'	2 x 3/4" Male NPT



**OIL SHIELD®**  
**Heavy Duty Dual Arm**  
**Auto – Retractable Air Hose Reels**

Model#	SKU#	Description	I.D.	Length	Fittings
OSRDA38100	10011128	OilShield Retractable Rubber Air Hose Reel 3/8" X 35' w/ 3' Lead-In Hose	3/8"	100'	2 x 3/8" Male NPT with reducers
OSRDA1250	10011126	OilShield Retractable Rubber Air Hose Reel 1/2" X 50' w/ 3' Lead-In Hose	1/2"	50'	2 x 1/2" Male NPT with reducers
OSRDA12100	10011124	OilShield Retractable Rubber Air Hose Reel 1/2" X 100' w/ 3' Lead-In Hose	1/2"	100'	2 x 1/2" Male NPT with reducers





# Manual Air Hose Reels

The BluBird Manual Air Hose Reel is built from heavy-duty 18-gauge powder-coated steel and can be wall or bench mounted for versatile use. Its smooth uncoil and rewind mechanism, spring-loaded tension brake, and locking pin ensure safe, controlled operation, while a solid brass swivel delivers leak-free performance up to 300 PSI.

## Features

- Reel holds 100 feet of a 3/8 air hose
- Solid brass swivel prevents against leaks
- Hand crank with spring loaded axle for easy winding
- Heavy-Duty Brass Swivel
- Comes with Hand Brake
- Beveled flanges prevent hose kinks



Model#	SKU#	Description	I.D.	Length	Fittings
BBMR3850	10010429	BluBird Heavy Duty Manual Air Hose Reel, Holds 50 Feet Hose	3/8"	50'	3/8"
BBMR38100	10010428	BluBird Heavy Duty Manual Air Hose Reel, Holds 100 Feet Hose	3/8"	50'	3/8"









# Air Blow Gun Kit

## Power In Your Hands, Clean Smarter, Not Harder

The Clean Sweep Air Blow Gun Kit (CS186) delivers powerful, precise cleaning with a lightweight aluminum body, ergonomic grip, and versatile nozzles. Adjustable airflow and noise control make it ideal for both delicate and heavy-duty tasks.

### Features

- 170 PSI pressure rating
- 16.33 CFM air flow
- High-strength aluminum alloy body
- Comes with versatile nozzles
- Ideal for angled cleaning
- High air delivery for faster cleaning
- Textured handle ensures comfort and slip resistance
- Short and extended tips for targeted airflow in hard-to-reach areas
- Designed for prolonged, effortless use



Model#

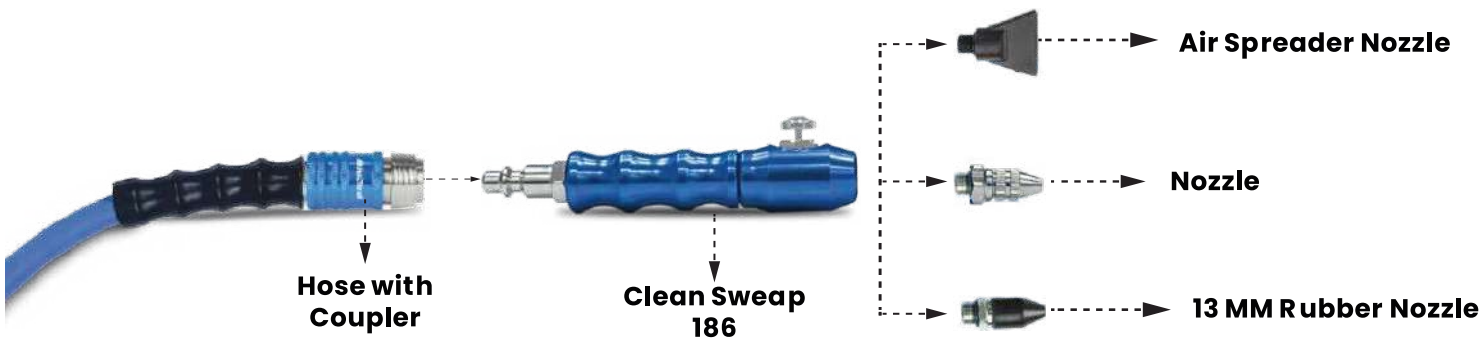
SKU#

Description

CS186-2

10013571

Clean Sweep CS186 Aluminum Air Blow Gun Kit







# Mini Air Blow Gun Kit

## Compact Precision For Delicate And Confined Cleaning

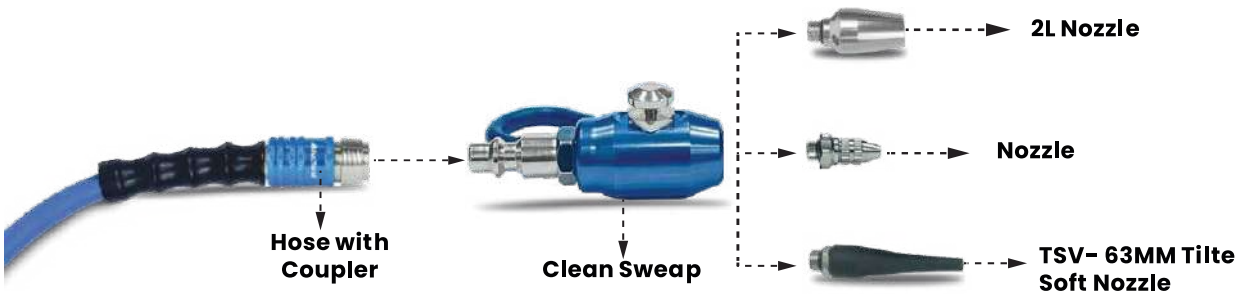
The Mini Air Blow Gun Kit (CS185) offers compact precision for confined spaces and delicate cleaning tasks. Its light-weight aluminum body, ergonomic design, and versatile nozzles ensure efficient, comfortable operation. Perfect for industrial and workshop use.

### Features

- 170 PSI pressure rating
- 16.33 CFM air flow
- High-strength aluminum alloy body
- Comes with versatile nozzles
- Ideal for angled cleaning
- High air delivery for faster cleaning
- Textured handle ensures comfort and slip resistance
- Short and extended tips for targeted airflow in hard-to-reach areas
- Designed for prolonged, effortless use



Model#	SKU#	Description
CS185-2	10013570	Clean Sweep CS186 Aluminum Mini Air Blow Gun Kit







**5in1<sup>1/4</sup> - IN. UNIVERSAL SAFETY COUPLER**

**5-In-1 Coupler**

**This Coupler Accepts all 5 Interchanges**  
 The 5-in-1 Coupler (3/8" & 1/4") offers five connection options in one compact, durable design. Built for pros and DIYers, it ensures quick, reliable, and corrosion - resistant connections with ease.

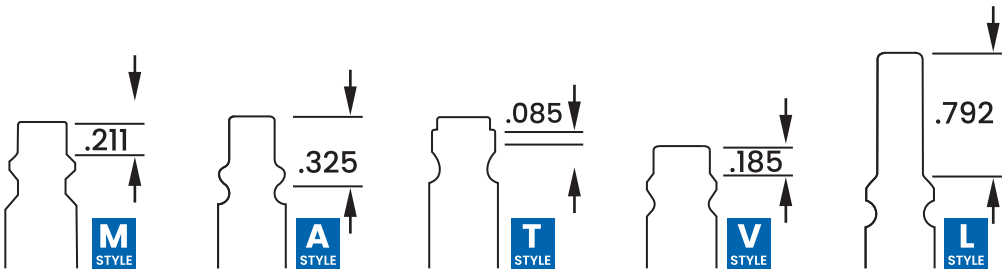
**Features**

- Excellent grip
- Fits all major plug types - M, V, T, A, and L
- Safely bleeds air
- Heavy-duty steel
- Quick connect coupling



Model#	SKU#	Description
5CP-38	10013572	5-in-1 Coupler w/ 3/8" Female Thread
CP5-1	10013396	5-in-1 Coupler w/ 1/4" Female Thread

**The Only Coupler  
 You'll Ever Need  
 Five Fittings,  
 Zero Hassle**







Comes with stainless-steel claw fittings

– Delivers industrial-grade power with significant weight savings and all-weather flexibility

Pro Jack Hammer Air Hose

Features

- 40% Lighter | 100% Rubber
- Ozone resistant & Abrasion resistant
- Kink resistant
- 4-Finger grip bend restrictor
- Abrasion, ozone and kink-resistant cover
- Fully wrapped finish for added protection

Limited Lifetime Warranty



Why Choose It?

- Heavy-duty premium rubber with braided reinforcement
- Safe 300 PSI working pressure, 4:1 safety factor
- Stainless steel claw fittings for leak-free connection
- 4-finger bend restrictor for easy handling
- Resistant to abrasion, ozone, and kinking
- Backed by 2-year warranty for durability



SCAN FOR VIDEO



Model#	SKU#	Description	I.D.	Length	Fittings
BBPROJH3450	10010454	BluBird Pro Rubber Jack Hammer Air Hose Assembly	3/4"	50'	Stainless Steel Claw Fittings
BBPROJH34100	10010450	BluBird Pro Rubber Jack Hammer Air Hose Assembly	3/4"	100'	Stainless Steel Claw Fittings



FAQs

**Q. How does the BluBird Pro hose's lighter weight impact project efficiency?**

A: At 9 pounds lighter than standard hoses, it reduces worker fatigue and speeds up repositioning and setup, especially on busy roadwork or demolition sites.

**Q. Why are stainless steel claw fittings important for pneumatic tool users?**

A: They provide a secure, leak-resistant connection that minimizes compressed air loss, ensuring jackhammers operate at peak power and reducing costly downtime.

**Q. What makes this hose ideal for use in extreme weather conditions?**

A: Its 100% rubber construction and reinforced braid maintain flexibility and reliability from -50°F to +190°F, performing reliably in freezing cold or intense heat found on job sites year-round.

**Q. How do safety and control features improve worker confidence and results?**

A: The 4:1 safety factor and ergonomic 4-finger grip bend restrictor help users handle the hose with greater accuracy and stability, lowering accident risk and making daily tasks smoother and safer.



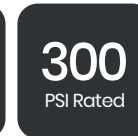


## Rubber Jack Hammer Hose

### Features

- 100% Rubber
- Ozone resistant & Abrasion resistant
- Kink resistant
- 4-Finger grip bend restrictor
- Abrasion, ozone and kink-resistant cover
- Fully wrapped finish for added protection

### Limited Lifetime Warranty



*Comes with stainless-steel claw fittings  
– Built for Harsh Jobsite Use*

## Why Choose It?

- Built tough for demanding job sites with premium rubber and heavy-duty polyester braid reinforcement
- Ensures secure, hassle-free performance with universal claw fittings
- Reliable under pressure with 300 PSI working rating and safety factor protection
- Reduces downtime thanks to abrasion-, ozone-, and kink-resistant durability
- Enhanced visibility with bright red jacket for added safety on worksites
- Flexible performance across extreme temperatures from -40°F to +180°F



Model#	SKU#	Description	I.D.	Length	Fittings
RVJH3450Y	10011554	Impulse Rubber Jack Hammer Hose Assembly - Yellow	3/4"	50'	Stainless Steel Claw Fittings
RVJH3450R-1	10011552	Impulse Rubber Jack Hammer Hose Assembly - Red	3/4"	50'	Stainless Steel Claw Fittings
RVJH34100R-1	10011548	Impulse Rubber Jack Hammer Hose Assembly - Red	3/4"	100'	Stainless Steel Claw Fittings



## FAQs

### Q. Why choose 3/4" over 1/2" for a 100' run?

A: Pressure drop. At 60–90 CFM (typical breakers), a 1/2" line will lose pressure and torque over 100'. 3/4" ID keeps more of the compressor's pressure at the tool—stronger hits, faster production, less heat and wear on the hammer.

### Q. What couplings and safety hardware do I need?

A: Use the same style and size on both sides (don't mix claw styles or sizes). Always install: Safety lock pins/clips on universal ("Chicago") couplings, A short whip hose (3–5 ft) between the main hose and tool for ergonomics, and Whip checks (safety cables) at each connection. Inspect gaskets daily and replace worn claws—no cracks, no rounded lugs.

### Q. Will this 3/4" × 100' hose work with my compressor and jackhammer?

A: Yes—this size is the jobsite standard for pneumatic breakers running around 90–125 PSI. The 3/4" ID maintains airflow on longer runs, so your tool doesn't starve for CFM. Just make sure your end connections match your rig (universal "Chicago" claws or NPT—use what your site standard is), and confirm your compressor's CFM meets the hammer's requirement.

### Q. Operating limits & care—anything to watch out for?

A: Follow the product working-pressure and temperature ratings on the spec tab (typical breaker duty; not for steam or fuels). For long life: Lay out straight; avoid tight bends and pinch points. Keep clear of sharp edges, hot exhausts, and heavy traffic. Rinse off oil/grit; let dry before storage, and Check fittings/crimps, bend restrictors, and stopper daily—replace at first sign of damage.





# Auto- Retractable Jackhammer Hose Reels

The BluBird Jackhammer Hose Reel is built tough for high-impact pneumatic tool applications. Constructed with industrial-grade 18-gauge powder-coated steel and a dual-arm support system, it provides maximum stability and performance on the job site. Designed specifically for jackhammer hoses, it features a 12-point precision ratchet system for locking the hose at any length, a reinforced L-bracket base for mounting on trucks or trailers, and four non-sag rollers to minimize abrasion during retraction. Ideal for construction crews, road repair teams, and heavy-duty pneumatic setups.

### Features

- 18 Gauge powder-coated steel construction
- 12-point ratchet system which helps lock out on the hose at shorter lengths
- Specialized internal system reduces the spring vibration, enables quieter
- Includes Lead-in hose of relevant brand

### Mounting Options



## BluBird® Heavy Duty Dual Arm Auto – Retractable Jack Hammer Hose Reel

Model#	SKU#	Description	I.D.	Length	Fittings
BBJHR3450	10010419	BluBird Jack-Hammer Air Hose Dual Arm Reel	3/4"	50'	Stainless Steel Claw Fittings





# Swivel Bracket 360 Degree Reel Mount

The BluBird Swivel Mount 360° is a robust floor-mounting solution for hose reels, engineered to deliver maximum flexibility and strength. Its full 360° swivel rotation ensures smooth hose access from any direction, making it perfect for workshops, garages, and industrial facilities. Built from powder-coated carbon steel, this heavy-duty mount is corrosion-resistant, vibration-tested, and designed to withstand demanding environments while keeping reels anchored securely in place.

### Features

- Full 360° swivel for easy multi-directional hose use
- Secure floor-mount design for stability and safety
- Heavy-duty carbon steel with powder-coated finish
- Corrosion- and temperature-resistant for tough environments
- Load- and vibration-tested for long-lasting performance



SCAN FOR VIDEO



Detach top plate from the bottom plate.



Place bottom plate on floor and mark holes.



Drill holes in floor.



Insert lag shields in holes and place bottom plate over the holes.



Use lag screws to attach bottom plate to the floor.



Attach top plate to the reel.



Attach top plate and reel to the bottom plate.

Model#

SKU#

Description

HRSB360

10013569

Swivel Bracket 360 Degree Reel Mount

# Swivel Mount 180 Degree DA Medium

The BluBird Swivel Mount 180° (Single Arm & Dual Arm) is a durable wall-mounting solution designed for flexible and secure hose reel installation. Its 180° swivel motion provides smooth side-to-side positioning, while the powder-coated steel build ensures strength and corrosion resistance. The Dual Arm version features a dual-bearing design for added stability under heavy loads, and both models include an integrated locking mechanism for safe, long-lasting use.

### Features

- 180° swivel motion for flexible wall-mounted positioning
- Single Arm & Dual Arm options for different reel capacities
- Dual-bearing design (Dual Arm) for heavy-duty stability
- Powder-coated steel for strength & corrosion resistance
- Integrated safety lock with space-saving design



SCAN FOR VIDEO



Mark two holes on the wall for the base plate.



Secure the mounting plate with load-rated fasteners suitable for the wall and environment.



Attach the reel to the swivel arm and secure it with bolts.



Place the reel onto the mounted base plate.



Insert the swivel rod through the holes of the base plate and swivel arm plate.



Tighten the plate with the wing nut provided.



Your reel is now securely mounted on the wall.

Model#

SKU#

Description

HRS180

10012848

180° Hose Reel Swivel Mount

HRSDA180

10013506

Swivel Mount 180 Degree DA Medium



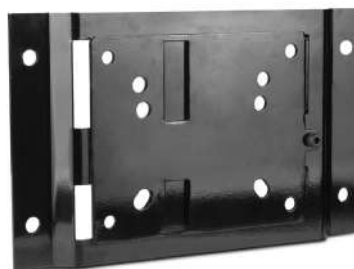


## EZ-Hose Reel Wall Mount Bracket

The EZ-Hose Reel Wall Mount Bracket offers a simple, secure, and versatile way to mount hose reels on walls or floors. With its sliding plate mechanism and single-bolt lock, installation is quick and reliable. Built from heavy-duty, powder-coated steel, it supports up to 110 lbs and is ideal for use in garages, workshops, and industrial settings.

### Features

- Seamless sliding plate for quick installation
- Single-bolt locking system ensures secure fit
- Heavy-duty construction with powder-coated finish
- Corrosion-resistant, built for indoor & outdoor use
- Supports up to 110 lbs for small to medium reels



**SCAN FOR VIDEO**



Secure the bracket's bottom plate to the wall with load-rated fasteners.



Attach the second plate to the base of the reel with nuts and bolts.



Pick up the reel and align the attached plate with the wall-mounted plate.



Slide the reel plate into the wall plate until properly seated.



Tighten the bottom screw of the front plate to lock the reel securely in place.



Your reel is now securely mounted on the wall.

Model#	SKU#	Description
EZHRWMB	10013977	EZ-Hose Reel Wall Mount Bracket

## Sliding Hose Reel Mount Bracket- Single Arm

The BluBird Industries Sliding Hose Reel Mount Bracket – Single Arm is a premium solution for mounting hose reels overhead on racks or walls. Designed for both retail displays and workshop setups, its sliding mechanism allows fast, adjustable installation with minimal tools. Built tough and tested under extreme conditions, this bracket delivers long-lasting reliability in commercial and industrial environments alike.

### Features

- Sliding mechanism enables quick overhead installation
- Ideal for racks, stores, and workshops
- Secure locking system prevents movement
- Holds up to 1.5x rated reel capacity
- Corrosion-resistant, tested for 50,000 swivels under load



**SCAN FOR VIDEO**



Position the mount under the shelf where you want to install your reel.



Take the plates provided with the mount and place them on both ends of the mount from the top of the rack or shelf.



Secure the top plates to the bottom plate



Slide the reel into the mounted bracket.



Insert the safety pin/bolt to lock the plates securely and prevent separation.



Your reel is now securely mounted on the rack.

Model#	SKU#	Description
SHRMB	10013604	Sliding Hose Reel Mount Bracket - Single Arm









40% Lighter

Than standard rubber water hoses

Rubber Water Hoses

Features

- 100% Rubber Hose
- 3/4 MALE + FEMALE GHT Set
- Polyester Braided
- Kink Resistant
- Ozone Resistant
- Abrasion Resistant
- 4 Finger grip bend restrictor

Limited Lifetime Warranty

Extreme Conditions Flexibility -50°F to +190°F

500 PSI Burst Pressure

212°F Hot Water Handling

Hose ID	GPM (at ~50 PSI)	Best For
5/8"	11-13 GPM	Residential, light-duty landscaping
3/4"	17-20 GPM	Commercial, agriculture, construction
1"	30-35 GPM	Industrial washdown, firefighting, heavy-duty

Why Choose It?

- 40% Lighter than traditional rubber hoses
- All-Weather Flexibility — Stays flexible to -50°F
- 500 PSI Burst Rating — Overbuilt for peace of mind
- Heavy-Duty Brass GHT Fittings — Leak-free connections
- Bend Restrictors Included — Reduce wear and strain



SCAN FOR VIDEO



Model#	SKU#	Description	I.D.	Length	Fittings
AL3410	10010015	AG-Lite Rubber Water Hose Assembly 3/4" X 10'	3/4"	10'	3/4" Male + Female GHT
AL3415	10010017	AG-Lite Rubber Water Hose Assembly 3/4" X 15'	3/4"	15'	3/4" Male + Female GHT
AL3450	10010019	AG-Lite Rubber Water Hose Assembly 3/4" X 50'	3/4"	50'	3/4" Male + Female GHT
AL34100	10010016	AG-Lite Rubber Water Hose Assembly 3/4" X 100'	3/4"	100'	3/4" Male + Female GHT
AL34150	10012944	AG-Lite Rubber Water Hose Assembly 3/4" X 150'	3/4"	150'	3/4" Male + Female GHT
AL5810	10010023	AG-Lite Rubber Water Hose Assembly 5/8" X 10'	5/8"	10'	3/4" Male + Female GHT
AL5815	10010026	AG-Lite Rubber Water Hose Assembly 5/8" X 15'	5/8"	15'	3/4" Male + Female GHT
AL5825	10010028	AG-Lite Rubber Water Hose Assembly 5/8" X 25'	5/8"	25'	3/4" Male + Female GHT
AL5850	10010029	AG-Lite Rubber Water Hose Assembly 5/8" X 50'	5/8"	50'	3/4" Male + Female GHT
AL5875	10010032	AG-Lite Rubber Water Hose Assembly 5/8" X 75'	5/8"	75'	3/4" Male + Female GHT
AL58100	10010024	AG-Lite Rubber Water Hose Assembly 5/8" X 100'	5/8"	100'	3/4" Male + Female GHT
AL58150	10012945	AG-Lite Rubber Water Hose Assembly 5/8" X 150'	5/8"	150'	3/4" Male + Female GHT
ALONE15	10010036	AG-Lite Rubber Water Hose Assembly 1" X 15'	1"	15'	3/4" Male + Female GHT
ALONE25	10010037	AG-Lite Rubber Water Hose Assembly 1" X 25'	1"	25'	3/4" Male + Female GHT
ALONE50	10010038	AG-Lite Rubber Water Hose Assembly 1" X 50'	1"	50'	3/4" Male + Female GHT
ALONE100	10010035	AG-Lite Rubber Water Hose Assembly 1" X 100'	1"	100'	3/4" Male + Female GHT
AL5806	10010022	AG-Lite Rubber Water Hose Assembly 5/8" X 6'	5/8"	6'	3/4" Male + Female GHT
AL3406	10010014	AG-Lite Rubber Water Hose Assembly 3/4" X 6'	3/4"	6'	3/4" Male + Female GHT
ALONE06	10010034	AG-Lite Rubber Water Hose Assembly 5/8" X 6'	1"	6'	3/4" Male + Female GHT
AL5806-2pk	10015622	AG-Lite 100% Premium Rubber Water Lead In Hose 5/8" X 6' 2 Pack	5/8"	6'	3/4" Male + Female GHT
AL5810-2pk	10015620	AG-Lite 100% Premium Rubber Water Lead In Hose 5/8" X 10' - 2 Pack	5/8"	10'	3/4" Male + Female GHT
AL5815-2pk	10015621	AG-Lite 100% Premium Rubber Water Lead In Hose 5/8" X 15' - 2 Pack	5/8"	15'	3/4" Male + Female GHT
AL3406-2pk	10015619	AG-Lite 100% Premium Rubber Water Lead In Hose 3/4" X 6' 2 Pack	3/4"	6'	3/4" Male + Female GHT
AL3410-2pk	10015624	AG-Lite 100% Premium Rubber Water Lead In Hose 3/4" X 10' 2 Pack	3/4"	10'	3/4" Male + Female GHT
AL3415-2pk	10015626	AG-Lite 100% Premium Rubber Water Lead In Hose 3/4" X 15' 2 Pack	3/4"	15'	3/4" Male + Female GHT
ALONE06-2pk	10015623	AG-Lite 100% Premium Rubber Water Lead In Hose 1" X 6' - 2 Pack	1"	6'	3/4" Male + Female GHT
ALONE15-2pk	10015625	AG-Lite 100% Premium Rubber Water Lead In Hose 1" X 15' - 2 Pack	1"	15'	3/4" Male + Female GHT





**NEW  
PRODUCT**



**40% Lighter**

Than standard  
rubber water hoses

## High-Viz Water Hoses

### Features

- 100% Rubber Hose
- 3/4 MALE + FEMALE GHT Set with Revolving Grip
- Polyester Braided Reinforcement
- Kink Resistant & Ozone Resistant
- Abrasion Resistant
- High Visibility Color for Safety & Easy Identification

### Limited Lifetime Warranty



Hose ID	GPM (at ~50 PSI)	Best For
5/8"	11-13 GPM	Residential, light-duty landscaping
3/4"	17-20 GPM	Commercial, agriculture, construction

## Why Choose It?

- Hi-Viz Safety Yellow finish improves visibility to reduce tripping hazards.
- Revolving Grip prevents hose kinks at the spigot and reduces hand fatigue
- 100% Rubber Construction — extreme durability with no cracking or splitting
- All-Weather Flexibility — stays soft and easy to maneuver down to -50°F
- 40% Lighter than standard rubber hoses — less strain, more productivity
- Bend Restrictors and Brass Fittings included for leak-free, long-term use



Model#	SKU#	Description	I.D.	Length	Fittings
ALHV3450	10014418	AG-Lite High-Viz Rubber Water Hose Assembly 3/4" X 50'	3/4"	50'	3/4" Male + Female GHT Revolving Grip
ALHV34100	10014419	AG-Lite High-Viz Rubber Water Hose Assembly 3/4" X 100'	3/4"	100'	3/4" Male + Female GHT Revolving Grip
ALHV5850	10013978	AG-Lite High-Viz Rubber Water Hose Assembly 5/8" X 50'	3/4"	50'	3/4" Male + Female GHT Revolving Grip



## FAQs

### Q. Does it kink or tangle easily?

A: No — it's designed with a polyester-braided reinforcement and kink-resistant rubber construction that stays flexible, even under pressure or in tough environments.

### Q. Can I use it with a hose reel?

A: Yes, it's fully compatible with manual and auto-retractable reels built for 5/8" or 3/4" hoses. It feeds and retracts smoothly without jamming or catching.



**HOSE & GRIP ROTATE  
INDEPENDENTLY**



**MAKES CONNECTIONS &  
UNCOILING EASY**

### Q. Is the hose heavy to carry or drag?

A: Not at all. It's up to 40% lighter than traditional rubber hoses, so it's easier to maneuver across job sites or large properties without straining your back.

### Q. Does the revolving grip make a difference?

A: Absolutely. The 360° rotating grip prevents the hose from twisting at the spigot, reducing wear and tear while making setup faster and more comfortable.





# Best Farm Hose



## Impulse Water Hoses

### Features

- 100% Rubber Hose
- 3/4 MALE + FEMALE GHT Set
- Reinforced with Polyester Braided
- Kink Resistant
- Ozone & Abrasion Resistant
- 4-Finger Grip Bend Restrictor
- Extreme Weather Flexibility

### Limited Lifetime Warranty



**Engineered for daily contractor use -**  
Dependable performance in demanding conditions

Hose ID	GPM (at ~50 PSI)	Best For
5/8"	11-13 GPM	Residential, light-duty landscaping
3/4"	17-20 GPM	Commercial, agriculture, construction

## Why Choose It?

- Built to withstand tough job site abuse
- Balanced flexibility and ruggedness for professional handling
- Designed for efficient water flow and high-pressure work
- Compatible with hose reels and accessories used in industrial & commercial settings



Model#	SKU#	Description	I.D.	Length	Fittings
IMPRB5850	10012407	Impulse Rubber Water Hose Assembly 5/8" X 50'	5/8"	50'	3/4" Male + Female GHT
IMPRB58100	10012406	Impulse Rubber Water Hose Assembly 5/8" X 100'	5/8"	100'	3/4" Male + Female GHT
IMPRB3450	10012405	Impulse Rubber Water Hose Assembly 3/4" X 50'	3/4"	50'	3/4" Male + Female GHT
IMPRB34100	10012404	Impulse Rubber Water Hose Assembly 3/4" X 100'	3/4"	100'	3/4" Male + Female GHT



## FAQs

### Q. How hot of water can it handle?

A: The hose can handle hot water up to 212°F, making it suitable for a wide range of cleaning, rinsing, and washdown tasks.

### Q. Does it kink or twist while in use?

A: While no hose is completely kink-proof, this hose features a braided reinforcement layer and thick rubber walls to help resist kinks and provide steady water flow.

### Q. Is it compatible with standard hose reels and spigots?

A: Yes — it has standard 3/4" GHT male and female fittings and works seamlessly with most garden hose reels, carts, and faucet setups.

### Q. How heavy is it compared to other hoses?

A: Standard rubber hoses are typically heavier, but that extra weight brings greater strength and longer life — ideal for those who prioritize durability over portability.





**NEW  
PRODUCT**



**40% Lighter**

Than rubber  
water hoses

## Hybrid Water Hoses

### Features

- Hybrid polymer build
- Polyester yarn reinforced
- 3/4 MALE + FEMALE GHT Set
- Smooth outer cover
- Kink-free flow
- UV & ozone resistant
- Abrasion resistant
- Hi-Viz yellow color
- Lightweight & flexible

### Limited Lifetime Warranty



Hose ID	GPM (at ~50 PSI)	Best For
5/8"	11-13 GPM	Home gardens, lawn watering & backyard use
3/4"	17-20 GPM	Commercial & heavy-duty applications

## Why Choose It?

- Hybrid construction combines durability of rubber with lightness of PVC
- Revolving Grip minimizes twisting at the spigot for a better user experience
- Extreme all-weather flexibility, stays soft and easy to coil even at -40°F
- High-visibility yellow finish enhances safety and quick hose identification
- Smooth outer jacket resists abrasion, dirt pickup, and makes cleaning easier
- Hot-water safe up to 180°F for washdowns and professional use



Model#	SKU#	Description	I.D.	Length	Fittings
ALHYW5806-HV	10005735	Ag-Lite Hybrid Water Hose 5/8" X 6'	5/8"	6'	3/4" Male and Female GHT
ALHYW5815-HV	10005736	Ag-Lite Hybrid Water Hose 5/8" X 15'	5/8"	15'	3/4" Male and Female GHT
ALHYW5825-HV	10005773	Ag-Lite Hybrid Water Hose 5/8" X 25'	5/8"	25'	3/4" Male and Female GHT
ALHYW5850-HV	10005781	Ag-Lite Hybrid Water Hose 5/8" x 50'	5/8"	50'	3/4" Male and Female GHT
ALHYW58100-HV	10005784	Ag-Lite Hybrid Water Hose 5/8" X 100'	5/8"	100'	3/4" Male and Female GHT
ALHYW3406-HV	10005785	Ag-Lite Hybrid Water Hose 3/4" X 6'	3/4"	6'	3/4" Male and Female GHT
ALHYW3415-HV	10005788	Ag-Lite Hybrid Water Hose 3/4" X 15'	3/4"	15'	3/4" Male and Female GHT
ALHYW3425-HV	10005807	Ag-Lite Hybrid Water Hose 3/4" X 25'	3/4"	25'	3/4" Male and Female GHT
ALHYW3450-HV	10005820	Ag-Lite Hybrid Water Hose 3/4" x 50'	3/4"	50'	3/4" Male and Female GHT
ALHYW34100-HV	10005822	Ag-Lite Hybrid Water Hose 3/4" X 100'	3/4"	100'	3/4" Male and Female GHT

## FAQs

### Q. Can it be used with hot water?

A: The maximum temperature that can be used in our Hybrid hose is 140°F.

### Q. Is it compatible with hose reels?

A: Absolutely. Works seamlessly with manual and auto-retractable reels designed for 5/8" or 3/4" hoses.

### Q. Will it stay flexible in cold weather?

A: Yes, remains flexible down to -40°F, making it perfect for year-round use even in freezing conditions.

### Q. Is the hose safe for outdoor exposure?

A: Yes, its UV- and ozone-resistant hybrid jacket ensures durability in all weather conditions.





**NEW  
PRODUCT**



## Farm & Ranch Hose

### Features

- Durable PVC Construction
- 3/4" MALE + FEMALE GHT
- Polyester Braided Reinforcement
- Lightweight and Flexible
- UV & Ozone Resistant
- Abrasion Resistant Outer Layer
- 4 Finger-Grip Bend Restrictor
- Bright Green Color for High Visibility & Easy Identification

### Limited Lifetime Warranty

Extreme Conditions Flexibility -10°F to 70°F

**500** PSI Burst Pressure

**150°F** Hot Water Handling

Hose ID	GPM (at ~50 PSI)	Best For
5/8"	11-13 GPM	Irrigation, Livestock Operations, Site Maintenance

## Why Choose It?

- Built to withstand tough outdoor and farm conditions
- Remains soft and easy to handle in extreme temperatures
- Easier to carry and coil, reducing user fatigue
- Lasts longer under sun, rough surfaces, and frequent use
- Suitable for washdowns and irrigation tasks
- Bright color for easy identification in busy farm environments



Model#	SKU#	Description	I.D.	Length	Fittings
IMPV5850-RD	10005702	Impulse Farm & Ranch PVC Water Hose 5/8" x 50' - Red	5/8"	50'	3/4" Male and Female GHT
IMPV58100-RD	10005703	Impulse Farm & Ranch PVC Water Hose 5/8" x 100' - Red	5/8"	100'	3/4" Male and Female GHT



## FAQs

### Q. What is the maximum pressure the hose can handle?

A: The Avagard 5/8" Farm & Ranch Hose has a working pressure of 150 PSI and a burst pressure of 500 PSI, making it suitable for most farm and ranch water applications.

### Q. What temperature range is the hose suitable for?

A: It can be used in temperatures from -10°C to 70°C, making it reliable for both cold and warm weather conditions.

### Q. What type of fittings does it come with?

A: The hose includes a 3/4" GHT inner crimp brass fitting and a bend restrictor sleeve for durability and to protect the hose fittings.

### Q. How long is the hose and what material is it made from?

A: The hose is up to 100 feet long, made with a PVC cover and polyester braided reinforcement, providing flexibility, durability, and resistance to kinks.





PVC Water Hoses

Features

- Durable PVC Construction
- 3/4" MALE + FEMALE GHT
- Polyester Braided Reinforcement
- Lightweight and Flexible
- UV & Ozone Resistant
- Abrasion Resistant Outer Layer
- 4 Finger-Grip Bend Restrictor
- Bright Green Color for High Visibility & Easy Identification

Limited Lifetime Warranty

Extreme  
Conditions  
Flexibility  
-10°F to 60°F

500  
PSI Burst  
Pressure

150°F  
Hot Water  
Handling

Hose ID	GPM (at ~50 PSI)	Best For
5/8"	11-13 GPM	Home use, garden watering, small landscaping jobs
3/4"	17-20 GPM	Light commercial, nurseries, washdown stations

Why Choose It?

- Lightweight design makes it easy to handle and maneuver
- Brass fittings with bend restrictors for leak-free use
- High-visibility color for added safety and fast identification
- UV and ozone-resistant jacket for long-lasting outdoor use
- Great balance of flow and flexibility for everyday watering and rinsing tasks



Model#	SKU#	Description	I.D.	Length	Fittings
AVGPV5815	10012789	Avagard PVC Water Hose Assembly 5/8" X 15'	5/8"	15'	3/4" Male and Female GHT
AVGPV5850	10012791	Avagard PVC Water Hose Assembly 5/8" X 50'	5/8"	50'	3/4" Male and Female GHT
AVGPV58100	10012793	Avagard PVC Water Hose Assembly 5/8" X 100'	5/8"	100'	3/4" Male and Female GHT
AVGPV3415	10012796	Avagard PVC Water Hose Assembly 5/8" X 15'	3/4"	15'	3/4" Male and Female GHT
AVGPV3450	10012798	Avagard PVC Water Hose Assembly 5/8" X 50'	3/4"	50'	3/4" Male and Female GHT
AVGPV34100	10012800	Avagard PVC Water Hose Assembly 5/8" X 100'	3/4"	100'	3/4" Male and Female GHT
AVGPV5815-2pk	10015627	Avagard PVC Water Hose Assembly 5/8" X 15'. 2 Pack	5/8"	15'	3/4" Male and Female GHT
AVGPV3415-2pk	10015628	Avagard PVC Water Hose Assembly 5/8" X 15'. 2 Pack	5/8"	15'	3/4" Male and Female GHT







## Space-Saving Self-Coil Design

Automatically recoils after each use to eliminate tangles & save storage

## Recoil Water Hose

### Features

- Lightweight, Flexible PVC Construction
- Compact 3/4" Male + Female GHT Fittings
- Self-Coiling Design for Effortless Storage
- UV & Ozone Resistant for Long Outdoor Life
- Abrasion-Resistant Outer Jacket
- Reinforced with High-Tensile Polyester Yarn
- High-Visibility Color for Safety & Easy Identification

### Limited Lifetime Warranty



Hose ID	GPM (at ~50 PSI)	Best For
3/8"	6–8 GPM	Small washdown jobs, patios, food carts, garden tool rinsing, or mobile setups with limited space

## Why Choose It?

- Compact & Lightweight — Perfect for tight spaces and mobile use
- Self-Coiling Design — No need to wind or store on a reel
- Withstands outdoor conditions — UV, ozone, and abrasion resistant
- Saves time and space while providing reliable water flow
- Clean and simple — Ideal for patios, carts, garden sheds, or rinse stations



Model#	SKU#	Description	I.D.	Length	Fittings
AVGRWH25FT-BL	10012976	Avagard Recoil Water Hose 25'-Blue	-	25'	3/4" Male + Female GHT
AVGRWH25FT-GN	10012975	Avagard Recoil Water Hose 25'-Green	-	25'	3/4" Male + Female GHT
AVGRWH50FT-BL	10012981	Avagard Recoil Water Hose 50'-Blue	-	50'	3/4" Male + Female GHT
AVGRWH50FT-GN	10012980	Avagard Recoil Water Hose 50'-Green	-	50'	3/4" Male + Female GHT
AVGRWH75FT-BL	10012986	Avagard Recoil Water Hose 75'-Blue	-	50'	3/4" Male + Female GHT



## FAQs

### Q. Does it need a hose reel for storage?

A: No reel required! The self-coiling design means it tidies itself up after each use. Perfect for saving space and avoiding clutter in tight storage areas.

### Q. Is it compatible with standard nozzles or faucets?

A: Yes, it features standard 3/4" garden hose thread (GHT) male and female ends, which work with most nozzles, wands, and outdoor spigots.

### Q. Does the hose stretch out flat during use?

A: It extends enough for use but maintains a coiled shape to avoid dragging, tangling, or tripping hazards. Great for compact work zones where control matters.

### Q. How much water flow can I expect from a 3/8" recoil hose?

A: You'll get a steady 6–8 GPM at around 50 PSI — ideal for smaller tasks where mobility and convenience matter more than high volume.





**40% Lighter**  
 Than Standard Washdown Hoses

Wash Down Water Hose

- Features**
- 100% Rubber Construction
  - 3/4" MALE + FEMALE GHT Set with Revolving Grip
  - High-Strength Polyester Braiding
  - Designed for Daily, Heavy-Duty Use
  - Abrasion, Oil & Ozone Resistant Outer Cover
  - Flexible and Kink-Resistant
  - High-Visibility Color for Safety & Quick Identification

Limited Lifetime Warranty


 Extreme Conditions Flexibility  
 -50°F to +190°F

500  
 PSI Burst Pressure

212°F  
 Hot Water Handling

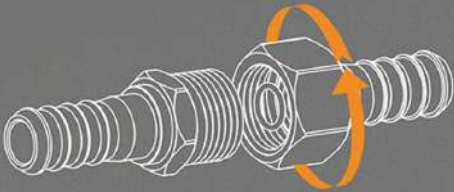
Hose ID	GPM (at ~50 PSI)	Best For
3/4"	17–20 GPM	Professional washdown, commercial kitchens, farmyards, industrial sanitation

Why Choose It?

- Purpose-built for washdown tasks — high flow, heat-resistant, and rugged
- 3/4" size delivers rapid water volume for fast cleaning
- Flexible in extreme temperatures and won't kink under pressure
- Revolving Grip eliminates hose twisting and reduces wrist fatigue
- Oil- and abrasion-resistant outer jacket extends product life
- Trusted by professionals in agriculture, food processing, and sanitation industries



Model#	SKU#	Description	I.D.	Length	Fittings
WD3450	10013403	Rubber Wash Down Hose 3/4" X 50'- Orange	3/4"	50'	3/4" Male + Female GHT
WD34100	10013404	Rubber Wash Down Hose 3/4" X 100'- Orange	3/4"	100'	3/4" Male + Female GHT



**Full 360° Flexibility**  
 With Swivel Stainless Steel Fitting

- 
 HOSE & GRIP ROTATE INDEPENDENTLY
- 
 MAKES CONNECTIONS & UNCOILING EASY

FAQs

Q. How does this hose perform with hot water over long periods?

A: This hose is built to handle hot water up to 212°F continuously without softening, cracking, or losing shape. It's ideal for extended use in commercial kitchens, animal facilities, and industrial cleaning setups.

Q. What makes the Revolving Grip so useful?

A: The Revolving Grip allows the hose to spin freely at the connection point, which means no more twisting, kinking, or hand strain when you're attaching it to spigots or moving around the job site.

Q. How does it compare to typical washdown hoses in performance?

A: It delivers higher water flow (up to 20 GPM), resists higher temperatures and pressure, and lasts significantly longer — thanks to its 100% rubber body and 500 PSI burst rating. It's engineered for professionals who expect more.





# Auto- Retractable Water Hose Reels

The AG-Lite Water Hose Reel is made of corrosion-resistant powder-coated Steel. It has single or dual adjustable guide arms, and an L-shaped reinforced base for ultimate stability. It features an upgraded 12-point ratchet spring system for precise hose locking, brass swivel joints for leak protection, and a reel stopper with four non-snag rollers to minimize abrasion. Versatile mounting options make it ideal for agriculture, farms, lawn & gardens and DIYers.

### Features

- 18 Gauge powder-coated steel construction
- 12-point ratchet system which helps lock out on the hose at shorter lengths
- Specialized internal system reduces the spring vibration, enables quieter
- Includes Lead-in hose of relevant brand

### Mounting Options



AG-LITE

## Heavy Duty Single Arm Auto – Retractable Water Hose Reels

Model#	SKU#	Description	I.D.	Length	Fittings
ALWRHD5850	10012969	AG-Lite 100% Rubber 5/8" X 50' Water Hose Reel	5/8"	50'	3/4" Male and Female GHT Fittings
ALWR5850-CR	10015054	AG-Lite 100% Rubber 5/8" X 50' Water Hose Reel - Cream Color	5/8"	50'	3/4" Male and Female GHT Fittings
ALWRHD3450	10012968	AG-Lite 100% Rubber 3/4" X 50' Water Hose Reel	3/4"	50'	3/4" Male and Female GHT Fittings
ALWR3450-GN	10015053	AG-Lite 100% Rubber 3/4" X 50' Water Hose Reel - Green Color	3/4"	50'	3/4" Male and Female GHT Fittings
ALWRHD1250	10012967	AG-Lite 100% Rubber 1/2" X 50' Water Hose Reel	1/2"	50'	3/4" Male and Female GHT Fittings





## Heavy Duty Single Arm Auto – Retractable Water Hose Reels

Model#	SKU#	Description	I.D.	Length	Fittings
BSWR5850-CR	10010656	BluSeal 100% Rubber 5/8" X 50' Water Hose Reel - Cream Color	5/8"	50'	3/4" Male and Female GHT Fittings
BSWR3450-CR	10010652	BluSeal 100% Rubber 3/4" X 50' Water Hose Reel - Cream Color	3/4"	50'	3/4" Male and Female GHT Fittings



## Heavy Duty Dual Arm Auto – Retractable Water Hose Reels

Model#	SKU#	Description	I.D.	Length	Fittings
ALWRDA58100	10012965	AG-Lite 100% Rubber 5/8" X 100' Water Hose XL Dual Arm Reel	5/8"	100'	3/4" Male and Female GHT Fittings
ALWRDA3465	10013211	AG-Lite 100% Rubber 3/4" X 65' Water Hose XL Dual Arm Reel	3/4"	65'	3/4" Male and Female GHT Fittings







**AG-LITE**  
**Manual Water Hose Reel**

The AG-Lite Wall Mounted Manual Hose Reel holds up to 150 feet of 5/8" hose (hose not included) and is constructed from powder-coated steel for durability and corrosion resistance. Its side-mounted hand crank allows smooth hose retraction, while a built-in hose guide ensures uniform winding.

**Features**

- Holds up to 150 ft of 5/8" hose
- Wall-mountable horizontal or vertical
- Powder-coated steel frame
- Handle for easy coiling of hose
- Corrosion-resistant finish
- Brass threaded inlet fitting
- Floor-space saving design
- Designed for 5/8" hose sizes
- Hose not included

Model#	SKU#	Description	I.D.	Length
ALMRW58150	10015055	AG-Lite Wall Mounted Manual Hose Reel 5/8" X 150' - Hose Not Included	5/8"	Holds up to 150'







# Swivel Mount 180 Degree DA Medium

The BluBird Swivel Mount 180° (Single Arm & Dual Arm) is a durable wall-mounting solution designed for flexible and secure hose reel installation. Its 180° swivel motion provides smooth side-to-side positioning, while the powder-coated steel build ensures strength and corrosion resistance. The Dual Arm version features a dual-bearing design for added stability under heavy loads, and both models include an integrated locking mechanism for safe, long-lasting use

## Features

- 180° swivel motion for flexible wall-mounted positioning
- Single Arm & Dual Arm options for different reel capacities
- Dual-bearing design (Dual Arm) for heavy-duty stability
- Powder-coated steel for strength & corrosion resistance
- Integrated safety lock with space-saving design



**SCAN FOR  
VIDEO**



Place the reel onto the mounted base plate.



Insert the swivel rod through the holes of the base plate and swivel arm plate.



Tighten the plate with the wing nut provided.



Your reel is now securely mounted on the wall.



Mark two holes on the wall for the base plate.



Secure the mounting plate with load-rated fasteners suitable for the wall and environment.



Attach the reel to the swivel arm and secure it with bolts.

Model#

SKU#

Description

HRS180

10012848

180° Hose Reel Swivel Mount

HRSDA180

10013506

Swivel Mount 180 Degree DA Medium





# Spray Guns

Avagard spray nozzles allow the user to find the right pattern for every task around the garden or the jobsite. The ergonomic soft grip handle affords a quick adjustment and makes everyday tasks easier, faster and more efficient.


## Features

- Heavy-duty metal body and finished with anodized rust-resistant coating
- The soft rubber-coated handle absorbs shocks and offers a secure, non-slip grip
- Versatile 9/8 Spray Function
- Easily adjust spray strength to match the job
- Fits all 3/4" GHT standard garden hoses – no adapter needed
- Trigger Lock for Effortless Use
- 1-year unmatched warranty

From garden lovers to DIY warriors, the Avagard Spray Gun is designed to make your outdoor chores easier, faster, and way more satisfying. One nozzle. Every task. Total control.

Model#	SKU#	Description
AVGSPR002	10010174	Avagard Steel 9-Mode Spray Nozzle
		

Switch effortlessly between **jet, full, soaker, mist, flat, vertical, angle, cone, and shower**.

Model#	SKU#	Description
AVGSPR003	10010176	Avagard Steel 8-Mode 2nd Gen Spray Nozzle
		

Switch effortlessly between **jet, full, mist, flat, shower, cone, angle, and center**.





# Avagard Quick Connect Couplers and plugs

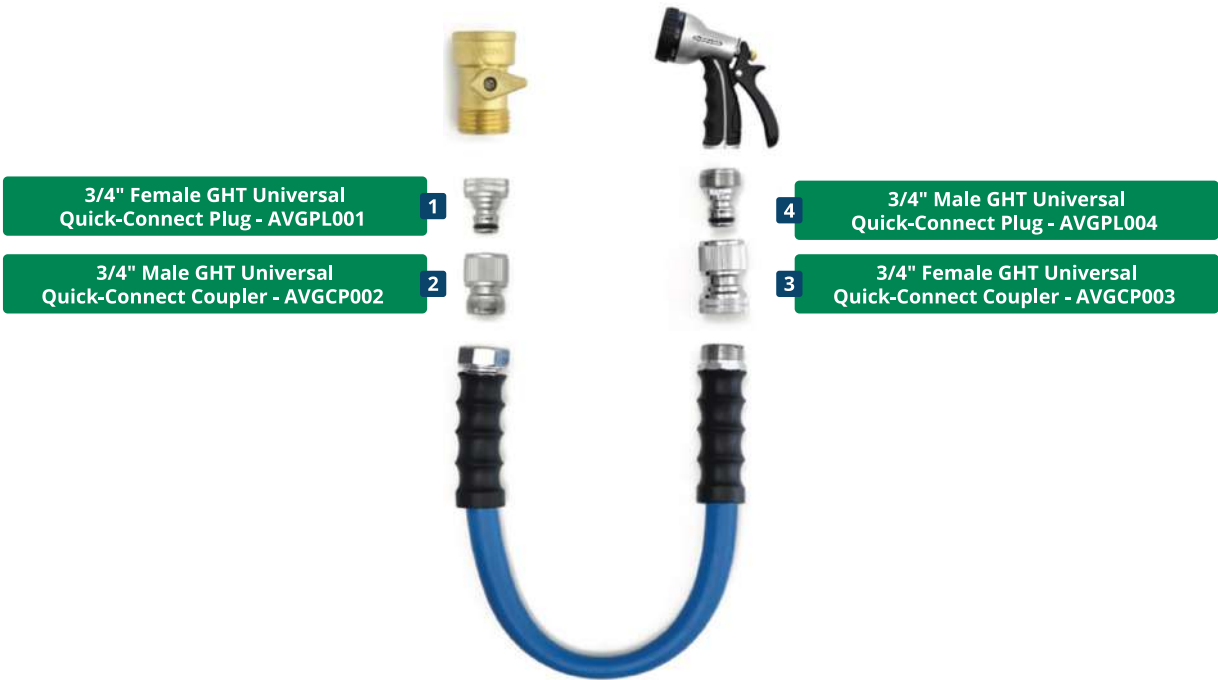
Avagard Quick Connect Couplers are crafted with durable, chrome-plated solid brass, and ensure a compatible, leak-free, secure fit for all your watering equipment. Designed for ease of use, it features one-hand operation, making it perfect for anyone.

## Features

- Durable chrome-plated solid brass construction
- Leak-free quick-connect system
- One-hand operation for ease of use
- Knurled grip for enhanced handling, even when wet
- Fits all standard 3/4" GHT hose and tool connections
- 1-year warranty

Ideal For: Garden hoses, nozzles, sprinklers, and watering accessories

Model#	SKU#	Description
AVGPL001	10010140	Avagard 3/4" Female GHT Universal Quick-Connect Plug
AVGCP002	10010126	Avagard 3/4" Male GHT Universal Quick-Connect Coupler
AVGCP003	10010128	Avagard 3/4" Female GHT Universal Quick-Connect Coupler
AVGPL004	10010142	Avagard 3/4" Male GHT Universal Quick-Connect Plug







# Avagard Twist Ease Kink Eliminator

Eliminate frustrating hose kinks and tangles with the Avagard Twist Ease Kink Eliminator. Designed to keep water flowing freely, it allows smooth, 360° rotation between your hose and tool—preventing twisting and reducing strain. Built with durable materials for long-lasting performance, it's ideal for any garden hose setup and makes handling hoses easier than ever.

## Features

- Prevents hose kinks and twisting
- Allows smooth 360° rotation
- Reduces hose wear and hand fatigue
- Compatible with 3/4" GHT hoses and fittings
- Durable, heavy-duty construction



Model#	SKU#	Description
AVG-HSF-75	10013177	Avagard Twist Ease Kink Eliminator

# Avagard Sweeper Nozzle

The Avagard Sweeper Nozzle is a powerful cleaning tool that effortlessly sweeps and cleans large areas. Crafted from solid brass with no plastic parts, this heavy-duty water sprayer reaches up to 25 feet, ensuring thorough cleaning of windows, screens, and hard-to-reach areas.

## Features

- High-pressure stream for fast, efficient surface cleaning
- Ideal for driveways, sidewalks, patios, decks, and more
- Heavy-duty metal construction resists wear and impact
- Compact, easy-to-handle design
- Compatible with all 3/4" GHT garden hoses



Model#	SKU#	Description
AVG-7504L01-M3	10013184	Avagard Sweeper Nozzle

# Avagard Fire Nozzle with Handle

The Avagard Fire Nozzle is a professional-grade firefighting tool engineered for precision and reliability in demanding environments. Crafted with durable materials like machined aircraft aluminum and stainless steel components, this nozzle ensures unmatched durability and longevity.

## Features

- Variable flow control for customizable spray patterns
- Constructed with aircraft-grade aluminum and stainless steel components
- Compatible with standard 3/4" GHT hoses
- Suitable for high-pressure applications up to 600 PSI



Model#	SKU#	Description
AVG-8008-8-U	10013182	Avagard Fire nozzle with handle





## Avagard Thumb Valve

The Avagard Thumb Valve is a game-changing solution for effortless hose management. Meticulously engineered from heavy-duty solid brass, this sturdy shut-off valve provides seamless on/off control with a stainless steel ball shut off and an oversized opening for superior water flow, ensuring peak performance.

### Features

- Thumb-operated valve for easy flow control
- Durable construction for extended use
- Ergonomic design for comfortable handling
- Compatible with standard irrigation systems
- Ideal for residential and commercial applications



## Avagard Easy Out Sprinkler Removing Tool

The Avagard Thumb Valve is a game-changing solution for effortless hose management. Meticulously engineered from heavy-duty solid brass, this sturdy shut-off valve provides seamless on/off control with a stainless steel ball shut off and an oversized opening for superior water flow, ensuring peak performance.

### Features

- Ergonomic handle for comfortable and controlled operation
- Durable construction ensures long-term reliability
- UV-resistant materials for enhanced durability
- Compatible with standard 3/4" GHT hoses and fittings
- Allows for quick and efficient removal of sprinkler heads



## Avagard Gulp Syringe Hand Pump

The Avagard Gulp Syringe Hand Pump allows users to drain a flooded area or conduct routine maintenance with ease and efficiency.

### Features

- Variable flow control for customizable spray patterns
- Durable construction with aircraft-grade aluminum and stainless steel components
- Ergonomic handle for comfortable and controlled operation
- Compatible with standard 3/4" GHT hoses
- Suitable for high-pressure applications up to 600 PSI
- Ideal for landscaping, turf maintenance, and equipment cleaning tasks



Model#	SKU#	Description
AVG-A-G12S-C	10013180	Avagard Gulp Syringe Hand Pump



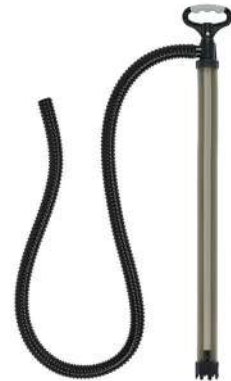


## Avagard Big Gulp Hand Pump

The Avagard Big Gulp Hand Pump is your ultimate solution for high-capacity effortlessly handling up to 35 oz. per stroke. Designed for versatility, it's ideal for automotive, industrial, or agricultural applications.

### Features

- Transfers up to 35 oz per stroke for fast fluid movement
- Self-priming for easy, hassle-free pumping
- Heavy-duty polycarbonate cylinder and aircraft aluminum shaft
- Removable intake filter for easy cleaning
- Fully disassemblable for maintenance and longevity
- Includes a 72" discharge tube for extended reach



Model#	SKU#	Description
AVG-A-G3672-CK	10013181	Avagard Big Gulp Hand Pump

## Avagard Magnum Fire Nozzle

The Avagard Magnum Fire Nozzle is a “go-to” firefighting companion that provides multi-pattern spray functions like Fog, Jet Stream, and Fan, and adjustable flow rates from 7 to 43 GPM. It adapts seamlessly to firefighting, industrial, and agricultural needs.

### Features

- Solid metal internal components with no plastic parts to break
- Effortless control with hydraulic assist on/off and multi-pattern sprays
- Prevents over-tightening damage, ensuring longevity
- Fire hose quality nozzle that feels great in your hands
- Designed for ¾" flow rates.



Model#	SKU#	Description
AVG-NG450	10013176	Avagard Magnum Fire Nozzle

## Avagard Drain Blaster

The Avagard Drain Blaster is a heavy-duty nozzle built to clean 4-inch to 6-inch drains, catch basins, sidewalks, and cart paths; this nozzle- operates effectively at a minimum water pressure of 70 PSI.

### Features

- Propels through drains with less effort
- Front jets cut clogs, rear jets push forward
- Made from heat-treated 303 stainless steel
- Compatible with wire locator for routing
- Operates at 70 PSI minimum
- Fits ¾" or 1" female hose threads



Model#	SKU#	Description
AVG-SN6-75	10013178	Avagard Drain Blaster









## Double Wire Braided Pressure Washing Hose

### Features

- Double Steel Wire Reinforcement for Maximum Strength
- Industrial-Grade Rubber Construction
- 6000 PSI Working, 18,000 PSI Burst
- Extreme Abrasion, Impact & Weather Resistance
- Kink Resistant Under High Load
- Designed for High-Volume, High-Pressure Flow
- Ideal for Demanding Commercial & Industrial Use

### Limited Lifetime Warranty

  
High Flow Capacity  
~4.5-6 GPM  
typical for 3/8"

  
Cold Weather Flexible to  
-50°F

**18,000**  
PSI Burst Pressure

**250°F**  
Hot Water Handling

## Why Choose It?

- Industrial Pressure Washing
- Paint Stripping & Surface Prep
- Heavy Equipment Cleaning
- Marine Maintenance & Dockyards
- Concrete, Brick, and Graffiti Cleaning
- Oil, Grease, and Grime Removal
- Municipal & Public Works Applications



Model#	SKU#	Description	I.D.	Length	Fittings
PWDW38100	10012931	Double Wire Pressure Washing Hose 3/8" X 100'	3/8"	50'	3/8" Male + Female NPT with Quick Connect Couplers
PWDW3850	10012932	Double Wire Pressure Washing Hose 3/8" X 50'	3/8"	100'	3/8" Male + Female NPT with Quick Connect Couplers



## FAQS

### Q. What makes a double wire hose different from single wire or braided polyester?over other types?

A: Double wire hoses are constructed with two layers of steel wire reinforcement, allowing them to handle higher PSI ratings (up to 6000 PSI working) while staying structurally stable under intense pressure and heat.

### Q. Can this hose be used for hot water cleaning?

A: Yes — it safely handles water temperatures up to 250°F, ideal for oil, grease, or chemical residue removal.

### Q. Is this overkill for a home pressure washer?

A: Yes — this is an industrial-grade hose, best used with commercial-grade machines that output 4500-6000 PSI. It's not compatible with standard residential or M22-style fittings.

### Q. Is it too stiff to work with or reel in?

A: Surprisingly, no — it's built with a flexible rubber jacket that maintains flexibility even in cold conditions (-50°F), and feeds smoothly on most pro-grade reels.





Single Wire  
Pressure Washer Hose

Features

- Premium Single Wire-Braided Reinforcement for Superior Strength
- Durable Rubber Outer Jacket — Abrasion and Ozone Resistant
- Quick Connect Couplers Included for Fast Setup and Breakdown
- 4000 PSI Working Pressure
- Kink Resistant & Flexible in Extreme Temperatures

Limited Lifetime Warranty

Extreme  
Conditions  
Flexibility  
-50°F to +190°F

16,000  
PSI Burst  
Pressure

250°F  
Hot Water  
Handling

High Flow  
Capacity  
~4.5-6 GPM  
typical for 3/8"



Why Choose It?

- Professional Pressure Washing & Cleaning
- Industrial and Construction Sites
- Automotive & Fleet Washing
- Marine and Harsh Environment Use
- Agriculture and Equipment Washdown
- Fast Setup Jobs Requiring Quick Connect Features



Model#	SKU#	Description	I.D.	Length	Fittings
PWSW3825-CP	10012760	Blu Shield Single Wire Pressure Washer Hose	3/8"	25'	3/8" Male + Female NPT with Quick Connect Couplers
PWSW3850-CP	10013014	Blu Shield Single Wire Pressure Washing Hose	3/8"	50'	3/8" Male + Female NPT with Quick Connect Couplers
PWSW38100-CP	10013015	Blu Shield Single Wire Pressure Washing Hose	3/8"	100'	3/8" Male + Female NPT with Quick Connect Couplers
PWSW38200-CP	10013024	Blu Shield Single Wire Pressure Washing Hose	3/8"	200'	3/8" Male + Female NPT with Quick Connect Couplers
PWSW38500	10013025	Blu Shield Single Wire Pressure Washing Hose (Bulk)	3/8"	500'	3/8" Male + Female NPT with Quick Connect Couplers



FAQs

**Q. How does the single-wire pressure washing hose improve jobsite safety?**  
A: The single wire braid delivers reliable strength for up to 4,000 PSI operation, reducing the risk of hose bursts, and as an added safety factor, a protective sleeve has been added.

**Q. Does this hose handle hot water?**  
A: Designed for flexibility, this hose maintains performance with hot water up to 250°F.

**Q. Is this hose suitable for use with high-pressure spray guns and foam cannons?**  
A: This hose is ideal for connecting to high-pressure spray guns and foam cannons, provided they match the pressure capabilities and coupler dimensions.

**Q. Is the hose rated for use with high-pressure washers for cleaning automotive or outdoor surfaces?**  
A: With a reinforced construction and high PSI rating, this hose is built to withstand the pressures typical of most commercial and residential pressure washers.









40% Lighter

Than traditional rubber pressure washer hoses

## Polyester Braided Pressure Washing Hoses

### Features

- 100% Rubber Construction
- Comes with M22 Fittings
- Polyester Braided Reinforcement
- Non-Marking Rubber Jacket – Won't Scuff Surfaces
- Kink & Abrasion & Ozone Resistant
- Flexible in Extreme Temperatures
- 4:1 Safety Factor – 12,000 PSI Burst Pressure
- 40% Lighter & Stronger than Standard Rubber Pressure Washer Hoses

### Limited Lifetime Warranty

Extreme Conditions Flexibility  
-50°F to +190°F

12,000 PSI Burst Pressure

250°F Hot Water Handling

High Flow Capacity  
~4.5-6 GPM typical for 3/8"

## Why Choose It?

- Clean, non-marking jacket ideal for driveways, siding, and vehicles
- Compatible with hot water up to 250°F — perfect for removing grease or oil
- Industry-standard M22 fittings for fast, secure hookup
- Ideal for compact storage, reel use, or portable cleaning setups
- Built for daily use with high abrasion, kink, and ozone resistance



Model#	SKU#	Description	I.D.	Length	Fittings
PW1425-NM	10011296	Blu Shield Rubber Pressure Washer Hose Assembly 1/4" X 25'	1/4"	25'	1/4" Male + Female NPT with M22 Fittings
PW1450-NM	10011300	Blu Shield Rubber Pressure Washer Hose Assembly 1/4" X 50'	1/4"	50'	1/4" Male + Female NPT with M22 Fittings



## FAQs

### Q. Will this hose work with my pressure washer?

A: Yes — it's compatible with most gas and electric pressure washers up to 3000 PSI that use M22 connections.

### Q. Is the hose heavy or difficult to manage?

A: No — it's up to 40% lighter than traditional rubber hoses, which makes it easy to carry, drag, or reel in.

### Q. Will it stay flexible in cold weather?

A: Yes — the hose remains soft and kink-free even at -50°F, ideal for year-round use.

### Q. Will it leave black streaks on surfaces?

A: No — the non-marking rubber outer layer ensures clean, streak-free results every time.

### Q. Can I use this for hot water applications?

A: Absolutely. It's built to handle water temperatures up to 250°F, making it perfect for heavy-duty or greasy cleanups.

### Q. Can I use it on a reel?

A: Yes, it works smoothly with manual or auto-rewind reels designed for 1/4" pressure washer hoses.





**40% Lighter**  
Than traditional rubber  
pressure washer hoses

Kevlar Braided  
Pressure Washing Hoses

Features

- 100% Premium Rubber Construction
- Kevlar Braided Reinforcement for Maximum Strength
- Heavy-Duty, High-Pressure Rated — 4000 PSI Working, 16,000 PSI Burst
- 4X Abrasion resistant
- Extreme Temperature Flexibility
- Handles Hot Water up to 250°F

Limited Lifetime Warranty

Extreme Conditions Flexibility  
Down to -20°F

16,000  
PSI Burst Pressure

250°F  
Hot Water Handling

High Flow Capacity  
~4.5-6 GPM  
typical for 3/8

Best For:

- Heavy-Duty Commercial Cleaning
- Industrial & Construction Sites
- Automotive & Fleet Maintenance
- Marine Applications — Saltwater & Harsh Environments
- Agriculture & Equipment Washdown
- Any Professional Use Requiring High PSI and Durability



Model#	SKU#	Description	I.D.	Length	Fittings
TTPW3815-NM	10013013	Blu Shield Tough Tek Rubber Pressure Washing Hose 3/8" X 15'	3/8"	15'	3/8" Male + Female NPT
TTPW3850-NM	10012747	Blu Shield Tough Tek Rubber Pressure Washer Hose 3/8" X 50'	3/8"	50'	3/8" Male + Female NPT
TTPW38100-NM	10012748	Blu Shield Tough Tek Rubber Pressure Washing Hose 3/8" X 100'	3/8"	100'	3/8" Male + Female NPT
TTPW38200-NM	10012749	Blu Shield Tough Tek Rubber Pressure Washing Hose 3/8" X 200'	3/8"	200'	3/8" Male + Female NPT
TTPW1206-NM	10013109	Blu Shield Tough Tek Rubber Pressure Washing Hose 1/2" X 6'	1/2"	6'	3/8" Male + Female NPT
TTPW1215-NM	10013160	Blu Shield Tough Tek Rubber Pressure Washing Hose 1/2" X 15'	1/2"	15'	3/8" Male + Female NPT
TTPW1250-NM	10012745	Blu Shield Tough Tek Rubber Pressure Washing Hose 1/2" X 50')	1/2"	50'	3/8" Male + Female NPT
TTPW12100-NM	10012746	Blu Shield Tough Tek Rubber Pressure Washing Hose 1/2" X 100'	1/2"	100'	3/8" Male + Female NPT
TTPW12200-NM	10013009	Blu Shield Tough Tek Rubber Pressure Washing Hose 1/2" X 200'	1/2"	200'	3/8" Male + Female NPT

Twin Packs

TTPW3815-NM-2pk	10015618	Blu Shield Tough Tek Rubber Pressure Washer Hose 3/8" X 15' - 2 Pack	3/8"	15'	3/8" Male + Female NPT
TTPW1206-NM-2pk	10015616	Blu Shield Tough Tek Rubber Pressure Washer Jumper Hose 1/2" X 6' - 2 Pack	1/2"	6'	3/8" Male + Female NPT
TTPW1215-NM-2pk	10015617	Blu Shield Tough Tek Rubber Pressure Washer Hose 1/2" X 15' - 2 Pack	1/2"	15'	3/8" Male + Female NPT







**40% Lighter**  
Than traditional rubber  
pressure washer hoses

Polyester Braided  
Pressure Washing Hose

- Features**
- 100% Rubber Construction
  - Comes with M22 Fittings
  - Polyester Braided Reinforcement
  - Non-Marking Rubber – Won't Scuff Surfaces
  - Kink & Abrasion & Ozone Resistant
  - Flexible in Extreme Temperatures
  - 3000 PSI Working Pressure – 4:1 Safety Factor
  - 40% Lighter & Stronger than Standard Rubber Pressure Washer Hoses

Limited Lifetime Warranty

Extreme  
Conditions  
Flexibility  
-50°F to +190°F

12,000  
PSI Burst  
Pressure

250°F  
Hot Water  
Handling

High Flow  
Capacity  
~4.5-6 GPM  
typical for 3/8

Why Choose It?

- Clean, non-marking jacket ideal for driveways, siding, and vehicles
- Compatible with hot water up to 250°F – perfect for removing grease or oil
- Industry-standard M22 fittings for fast, secure hookup
- Ideal for compact storage, reel use, or portable cleaning setups
- Built for daily use with high abrasion, kink, and ozone resistance



Model#	SKU#	Description	I.D.	Length	Fittings
TTPW1425-NM	10013010	Blu Shield Tough Tek Rubber Pressure Washing Hose	1/4"	25'	1/4" Male + Female NPT with M22 Fittings
TTPW1450-NM	10013011	Blu Shield Tough Tek Rubber Pressure Washing Hose	1/4"	50'	1/4" Male + Female NPT with M22 Fittings
TTPW14100-NM	10013012	Blu Shield Tough Tek Rubber Pressure Washing Hose	1/4"	100'	1/4" Male + Female NPT with M22 Fittings



FAQs

- Q. Is the hose heavy or difficult to manage?**  
A: No – it's up to 40% lighter than traditional rubber hoses, which makes it easy to carry, drag, or reel in.
- Q. Will it stay flexible in cold weather?**  
A: Yes – the hose remains soft and kink-free even at -50°F, ideal for year-round use.

- Q. Can I use this for hot water applications?**  
A: Absolutely. It's built to handle water temperatures up to 250°F, making it perfect for heavy-duty or greasy cleanups.
- Q. Can I use it on a reel?**  
A: Yes, it works smoothly with manual or auto-rewind reels designed for 1/4" pressure washer hoses.





# **HUMPACK 3000**

## **ELECTRIC PRESSURE WASHER**

Max Current / Circuit Amperage 120V - 15A / 2  
Working Pressure / Pressure in Transit 2000 PSI  
Max. Pressure / Pressure Intermittently 3000 PSI  
Flow Rate / GPM / LPM 1.2 GPM / 4.7 LPM  
Max. Flow / Min. Water 1.45 GPM / 5.45 LPM

Intended for Cold Water Use Only  
Further Equipment & Use Information on User Manual  
DO NOT REMOVE  
OR FOLD BOTTOM



**Blue Shield**





**NEW  
PRODUCT**

## All-in-one Pressure Washer Set Up

### Features

- 3000 PSI at 1.6 GPM for pro cleaning
- Industrial motor with TSS for durability & savings
- Operates at 73 dB—quieter than most vacuums
- Heavy-duty auto-retractable hose reel
- 50Ft. rubber pressure washer hose
- Dual-use design: wall mount or portable
- ADC12 aluminum alloy pump, corrosion-resistant
- Quick-connect nozzles & foam cannon included
- UL/CSA certified for safe, reliable use
- 15 ft inlet hose for easy connection
- Heavy-duty 3/4" GHT chrome-plated quick couplers

### 1 Year Warranty



## Ideal For

- Professional detailers
- Home garage enthusiasts
- Commercial maintenance crews
- Fleet wash operators
- DIYers looking for pro gear



**SCAN FOR  
VIDEO**

### Features

### Specifications

Max Pressure.....	3000 PSI
Max Flow.....	1.6 GPM
Hose Length.....	50 ft.
Hose Type.....	BluShield 100% Rubber Polyester Braided
Reel Type.....	Auto-Retractable, Wall Mount
Motor.....	Electric
Detergent Tank.....	1 Gallon, Integrated
Power Source.....	120V / 60Hz
Warranty.....	1 Year Limited Warranty



Model#	SKU#	Description
BS3415-QC	10015564	Blu Shield Inlet Hose 3/4" X 15' with 4 Pc QC Kit
BSHH02	10015531	Hose Hanger - Blu Shield
HB3000	10015529	Blu Shield 3000PSI High Pressure Washer (Casing,motor-pump and accessories) -120V-USA
HB3000+IH	10015565	Blu Shield 3000PSI High Pressure Washer (Casing,motor-pump and accessories+Inlet Hose 3415) -120V-USA
HBA000	10015524	Blu Shield Humpback Reel Accessories
HBA001	10015506	Blu Shield Humpback Reel Accessories - Foam Canon
HBA002	10015507	Blu Shield Humpback Reel Accessories - PW Gun
HBA003	10015508	Blu Shield Humpback Reel Accessories - PW Lance
HBA004	10015509	Blu Shield Humpback Reel Accessories - Accessory Holder
HBA012	10015558	Rotary Switch for Humpback Pump
TTPWR1450-HB3000	10015566	Blu Shield Toughtek Pressure Washer Reel 1/4" X 50 With Humpback
TTPWRHB1450	10015515	Blu Shield Pressure washer small wide reel 1/4" X 50' with humpback sliding plate + 7" Connection Hose + 15' Inlet Hose
TTPWRHB1450-3000	10015525	Blu Shield Pressure washer small wide reel 1/4" X 50' with 3000 PSI Pump -120V-USA (Casing,motor-pump and accessories + Reel with 50' Hose+ Plate+ 7" connection hose + 15' Inlet Hose)





# Auto- Retractable Pressure Washer Hose Reels

Blu Shield Pressure Washer Hose Reels deliver high-pressure performance with heavy-duty, powder-coated, 18-gauge steel. They are available with single or dual adjustable guide arms and a 6 - gauge, reinforced L-shaped base for stability. A 12-point ratchet spring locks hoses at any length, while brass swivel joints prevent leaks and four rollers reduce abrasion.

## Features

- 18 - Gauge powder-coated steel construction
- 12 - point ratchet system which helps lock out on the hose at shorter lengths
- Specialized internal system reduces the spring vibration, enables quieter
- Includes Lead-in hose of relevant brand

## Mounting Options







**TOUGH** **TEK**  
by Blu Shield

## Single Arm Auto - Retractable Pressure Washer Hose Reels

Model#	SKU#	Description	I.D.	Length	Fittings
TTPWR1450-NM	10013017	Blu Shield Tough Tek Rubber Pressure Washing Hose Reel 1/4" X 50' Polyester Braided	1/4"	25'	1/4" Male + Female NPT with M22 Fittings
TTPWR3850-NM	10015048	Blu Shield Tough Tek Rubber Pressure Washing Hose Reel 3/8" X 50' Kevlar Braided	3/8"	50'	3/8" Male + Female NPT



**TOUGH** **TEK**  
by Blu Shield

## Dual Arm Auto - Retractable Pressure Washer Hose Reels

Model#	SKU#	Description	I.D.	Length	Fittings
TTPWR14100-NM	10013018	Blu Shield Tough Tek Rubber Pressure Washing Hose Reel 1/4" X 100' Polyester Braided	1/4"	100'	1/4" Male + Female NPT with M22 Fittings
TTPWR38100-NM	10015049	Blu Shield Tough Tek Rubber Pressure Washing Hose Reel 3/8" X 100' Kevlar Braided	3/8"	100'	3/8" Male + Female NPT



**TOUGH** **TEK**  
by Blu Shield

## Dual Arm Auto - Retractable Stainless Steel Pressure Washer Hose Reels

Model#	SKU#	Description	I.D.	Length	Fittings
TTPWRSS3850-NM	10015050	Blu Shield Tough Tek Rubber Stainless Steel Pressure Washing Hose Reel 3/8" X 100' - Polyester Braided	3/8"	50'	3/8" Male + Female NPT



**Blu Shield**

## Dual Arm Auto - Retractable Pressure Washer Hose Reels

Model#	SKU#	Description	I.D.	Length	Fittings
PWSWRDA3850	10013301	Blu Shield Tough Pressure Washing Hose Reel 3/8" X 50' Kevlar Braided	3/8"	50'	3/8" Male + Female NPT





# Manual Pressure Washer Hose Reel

Blu Shield heavy - duty 18 - gauge powder coated reel is wall and workbench mount-able with smooth uncoil and rewind mechanism. The spring - loaded tension brake controls the release of the hose for smooth and safe operation while the spring loaded locking pin allows the user to lock the drum in place once the desired hose length is reached. The solid brass swivel ensures leak-free operation.

### Features

- 1 year warranty
- Reel holds 50 feet of pressure washing hose (hose not included)
- Hand crank with spring loaded axle for easy winding
- Solid brass swivel prevents against leaks
- Solid Steel construction
- Durable powder coated finish



Model#	SKU#	Description	Capacity
PWMR50	10012082	Blu Shield Steel Pressure Washer Manual Hose Reel 50' w/o Hose	Up to 50ft.
PWMR100	10012244	Blu Shield Steel Pressure Washer Manual Hose Reel 100' w/o Hose	Up to 100ft.



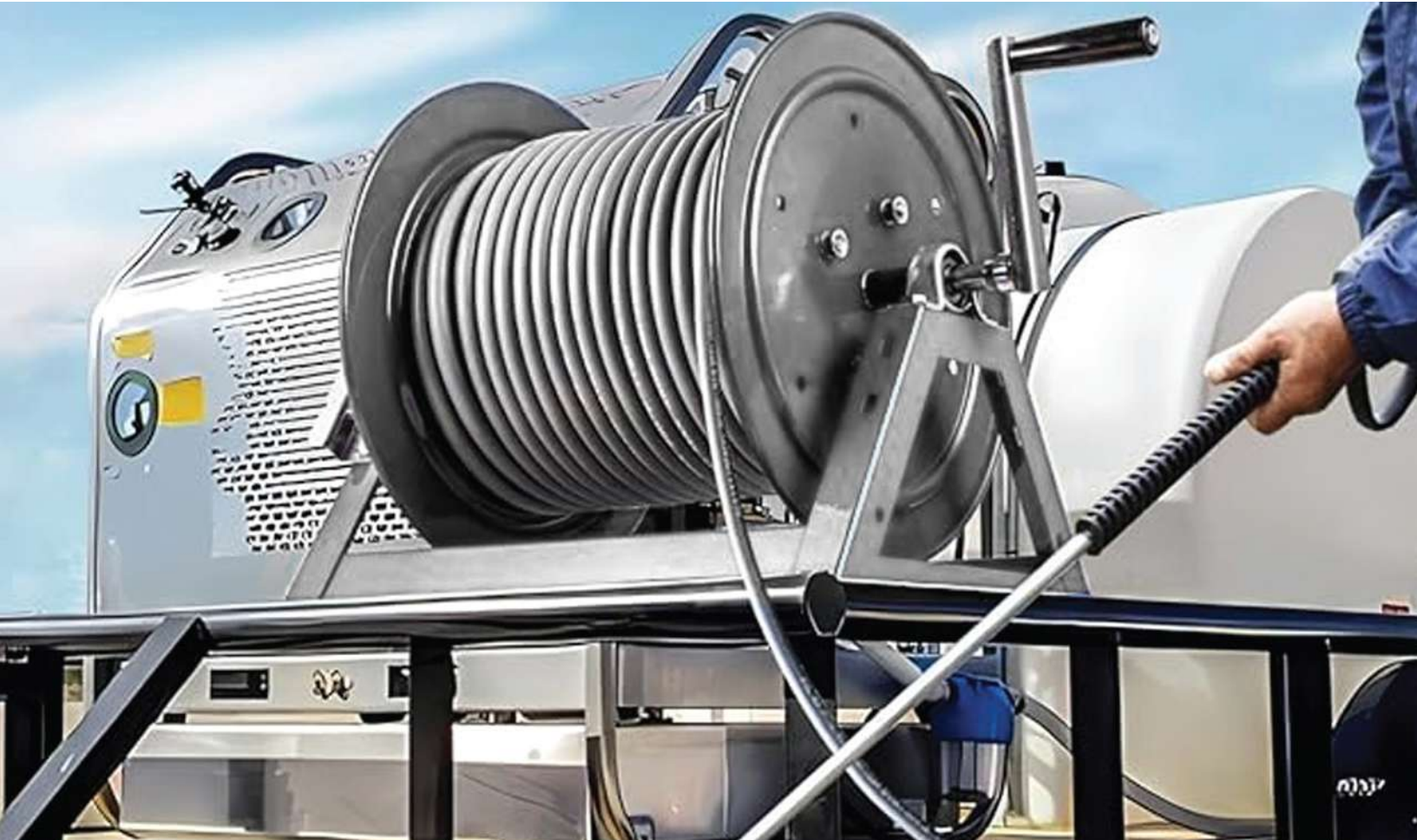


# A-Frame Pressure Washer Hose Reel

Introducing the Blu Shield Steel A-Frame Pressure Washer Hose Reel 300'—a robust solution for demanding cleaning tasks. This reel features a friction brake for precise control and a direct hand-crank rewind with a secure locking mechanism for effortless hose management. Built from solid steel and finished with a durable powder coat, it ensures long-lasting performance. The full-flow swivel enhances efficiency and ease of use, making it the perfect choice for heavy-duty pressure washing applications.

## Features

- 1 year warranty
- Accommodates a 300-foot pressure washer hose (hose not Included)
- Friction Brake
- Direct hand- crank rewind with locking pin
- Solid Steel construction
- Durable powder coated finish



Model#	SKU#	Description	Capacity
PWMRAF150	10012658	Blu Shield Steel A Frame 150' Pressure Washer Hose Reel	Up to 150ft.
PWMRAF300	10012659	Blu Shield Steel A Frame 300' Pressure Washer Hose Reel	Up to 300ft.
PWMRAF450	10012660	Blu Shield Steel A Frame 450' Pressure Washer Hose Reel	Up to 450ft.





# Swivel Bracket 360 Degree Reel Mount

The BluBird Swivel Mount 360° is a robust floor-mounting solution for hose reels, engineered to deliver maximum flexibility and strength. Its full 360° swivel rotation ensures smooth hose access from any direction, making it perfect for workshops, garages, and industrial facilities. Built from powder-coated carbon steel, this heavy-duty mount is corrosion-resistant, vibration-tested, and designed to withstand demanding environments while keeping reels anchored securely in place.

### Features

- Full 360° swivel for easy multi-directional hose use
- Secure floor-mount design for stability and safety
- Heavy-duty carbon steel with powder-coated finish
- Corrosion- and temperature-resistant for tough environments
- Load- and vibration-tested for long-lasting performance



SCAN FOR VIDEO



Detach top plate from the bottom plate.



Place bottom plate on floor and mark holes.



Drill holes in floor.



Insert lag shields in holes and place bottom plate over the holes.



Use lag screws to attach bottom plate to the floor.



Attach top plate to the reel.



Attach top plate and reel to the bottom plate.

Model#

SKU#

Description

HRSB360

10013569

Swivel Bracket 360 Degree Reel Mount

# Swivel Mount 180 Degree DA Medium

The BluBird Swivel Mount 180° (Single Arm & Dual Arm) is a durable wall-mounting solution designed for flexible and secure hose reel installation. Its 180° swivel motion provides smooth side-to-side positioning, while the powder-coated steel build ensures strength and corrosion resistance. The Dual Arm version features a dual-bearing design for added stability under heavy loads, and both models include an integrated locking mechanism for safe, long-lasting use.

### Features

- 180° swivel motion for flexible wall-mounted positioning
- Single Arm & Dual Arm options for different reel capacities
- Dual-bearing design (Dual Arm) for heavy-duty stability
- Powder-coated steel for strength & corrosion resistance
- Integrated safety lock with space-saving design



SCAN FOR VIDEO



Mark two holes on the wall for the base plate.



Secure the mounting plate with load-rated fasteners suitable for the wall and environment.



Attach the reel to the swivel arm and secure it with bolts.



Place the reel onto the mounted base plate.



Insert the swivel rod through the holes of the base plate and swivel arm plate.



Tighten the plate with the wing nut provided.



Your reel is now securely mounted on the wall.

Model#

SKU#

Description

HRS180

10012848

180° Hose Reel Swivel Mount

HRSDA180

10013506

Swivel Mount 180 Degree DA Medium





## EZ-Hose Reel Wall Mount Bracket

The EZ-Hose Reel Wall Mount Bracket offers a simple, secure, and versatile way to mount hose reels on walls or floors. With its sliding plate mechanism and single-bolt lock, installation is quick and reliable. Built from heavy-duty, powder-coated steel, it supports up to 110 lbs and is ideal for use in garages, workshops, and industrial settings.

### Features

- Seamless sliding plate for quick installation
- Single-bolt locking system ensures secure fit
- Heavy-duty construction with powder-coated finish
- Corrosion-resistant, built for indoor & outdoor use
- Supports up to 110 lbs for small to medium reels



**SCAN FOR VIDEO**



Secure the bracket's bottom plate to the wall with load-rated fasteners.



Attach the second plate to the base of the reel with nut bolts.



Pick up the reel and align the attached plate with the wall-mounted plate.



Slide the reel plate into the wall plate until properly seated.



Tighten the bottom screw of the front plate to lock the reel securely in place.



Your reel is now securely mounted on the wall.

Model#	SKU#	Description
EZHRWMB	10013977	EZ-Hose Reel Wall Mount Bracket

## Sliding Hose Reel Mount Bracket- Single Arm

The BluBird Industries Sliding Hose Reel Mount Bracket – Single Arm is a premium solution for mounting hose reels overhead on racks or walls. Designed for both retail displays and workshop setups, its sliding mechanism allows fast, adjustable installation with minimal tools. Built tough and tested under extreme conditions, this bracket delivers long-lasting reliability in commercial and industrial environments alike.

### Features

- Sliding mechanism enables quick overhead installation
- Ideal for racks, stores, and workshops
- Secure locking system prevents movement
- Holds up to 1.5x rated reel capacity
- Corrosion-resistant, tested for 50,000 swivels under load



**SCAN FOR VIDEO**



Position the mount under the shelf where you want to install your reel.



Take the plates provided with the mount and place them on both ends of the mount from the top of the rack or shelf.



Secure the top plates to the bottom plate



Slide the reel into the mounted bracket.



Insert the safety pin/bolt to lock the plates securely and prevent separation.



Your reel is now securely mounted on the rack.

Model#	SKU#	Description
SHRMB	10013604	Sliding Hose Reel Mount Bracket - Single Arm





## HP Hose QC Kit

### Key Features:

- For use with pressure washers up to 4,000 PSI
- Provides secure and quick fittings
- Gives you quick-connect fittings to create easy pump-to-hose and hose-to-gun connections
- Compatible with most M22 and quick-connect fittings on pressure washers



Model#	SKU#	Description
PWA001	10012304	BluShield High Pressure Hose Quick Connect Kit

## BluShield Turbo Nozzle

### Key Features:

- Creates a powerful jet of water
- For use with pressure washers up to 3,000 PSI
- Ideal for cleaning brick, concrete and vinyl
- Turbo nozzle cleans up to 40% faster than standard nozzles
- Quick connect for wands and spray guns



Model#	SKU#	Description
PWA002	10012305	Blushield Nozzle, 4.0 in.

## 4000 PSI Quick-Connect Spray Tips

### Key Features:

- Replace old, lost, or worn pressure washer spray tips
- Kit includes four high-pressure spray patterns, including 0°, 15°, 25°, 40°, and one cleaning solution spray tip
- Cleans a variety of surfaces from garage floors to windows
- Pairs with gas pressure washers and quick-connect wands



Model#	SKU#	Description
PWA003	10012306	Blushield 4000 PSI Quick-Connect Spray Tips, 3.5 in.

## 6-in-1 Nozzle

### Key Features:

- Combines (5) different spray patterns into one convenient head
- Eliminate the loss of multiple nozzles by combining all functions into one
- Spray patterns include 0 degrees, 15 degrees, 40 degrees, soap and flush for a complete clean
- For use with most brands of pressure washers up to 3,200 PSI
- Connects to quick-connect Wands



Model#	SKU#	Description
PWA003	10012306	Blushield 4000 PSI Quick-Connect Spray Tips, 3.5 in.





## 3/8" Quick-Disconnect Plug x 3/8" Male Pipe Thread Pressure Washer Adapter

### Key Features:

- Includes: 3/8" quick-disconnect plug x 3/8" female pipe thread adapter, 3/8" quick-disconnect socket x 3/8" female pipe thread adapter
- Use Teflon tape or paste for a leak-free connection



Model#	SKU#	Description
PWA005	10012308	Blushield 3/8" Quick-Disconnect Plug x 3/8" Male Pipe Thread Pressure Washer Adapter

## Male Metric x 3/8" Male Pipe Thread Pressure Washer Adapter

### Key Features:

- Converts female pipe thread to a female metric connection
- Hex nut makes installation easy
- Use pipe thread tape to ensure a leak-free connection
- For use on pumps, injectors, hoses, etc.



Model#	SKU#	Description
PWA006	10012309	Blushield Male Metric x 3/8" Male Pipe Thread Pressure Washer Adapter

## 3/8" Female Pipe Thread x Female Metric Pressure Washer Adapter

### Key Features:

- Converts male metric connection to 3/8" female pipe thread
- For use on wands, hoses, pumps, etc.
- Durable construction for pressure washer use
- Use pipe thread tape to ensure a leak-free connection



Model#	SKU#	Description
PWA007	10012310	Blushield 3/8" Female Pipe Thread x Female Metric Pressure Washer Adapter

## 1/4" Female Pipe Thread x Female Metric Pressure Washer Adapter

### Key Features:

- Converts male pipe thread to a male metric connection
- Attach and remove adapter quickly using the easy grip nut
- For use on wands, hoses, pumps, etc.
- Durable construction for pressure washer use



Model#	SKU#	Description
PWA008	10012311	Blushield 1/4" Female Pipe Thread x Female Metric Pressure Washer Adapter





## Male Metric x 1/4" Female Pipe Thread Pressure Washer Adapter

### Key Features:

- Converts male pipe thread to a female metric connection
- For use on pumps, injectors, hoses, etc.
- Hex nut makes installation easy
- Durable construction for pressure washer use



Model#	SKU#	Description
PWA009	10012312	Blushield Male Metric x 1/4" Female Pipe Thread Pressure Washer Adapter

## 1/4" Quick-Disconnect Plug x 1/4" Male Pipe Thread Pressure Washer Adapter

### Key Features:

- End 1 Type: Quick-disconnect plug
- End 3 Type: Quick-disconnect socket
- Includes: 1/4" Quick-disconnect plug x 1/4" male pipe thread adapter, 1/4" quick-disconnect socket x 1/4" female pipe thread adapter
- 1/4-inches FPT connection



Model#	SKU#	Description
PWA010	10012313	Blushield 1/4" Quick-Disconnect Plug x 1/4" Male Pipe Thread Pressure Washer Adapter

## 65° Black Low Pressure Quick-Disconnect Soap Tip

### Key Features:

- Black 65° spray tip applies soap pressure spray for pressure washer cleaning applications
- Connects directly to pressure washer wands with 1/4" quick-disconnect socket
- Quick-disconnect spray tips allow you the flexibility to select the specific spray tip pattern needed for your application



Model#	SKU#	Description
PWA011	10012314	Blushield 65° Black Low Pressure Quick-Disconnect Soap Tip

## 3.5 Orifice 40° Quick-Disconnect Pressure Washer Spray Tip

### Key Features:

- White 40° spray tip is for use on painted surfaces or equipment
- Connects directly to pressure washer wands with 1/4" quick-disconnect socket
- Quick-disconnect spray tips allow you the flexibility to select the specific spray tip pattern needed for your application



Model#	SKU#	Description
PWA012	10012315	Blushield #3.5 Nozzle 40° Quick-Disconnect Pressure Washer Spray Tip





## 3.5 Orifice 25° Quick-Disconnect Pressure Washer Spray Tip

### Key Features:

- Green 25° tips work on bare wood, siding, fences, and other similar surfaces
- Connects directly to pressure washer wands with 1/4" quick disconnect socket
- Quick-disconnect spray tips allow you the flexibility to select the specific spray tip pattern needed for your application



Model#	SKU#	Description
PWA013	10012316	Blushield #3.5 Nozzle 25° Quick-Disconnect Pressure Washer Spray Tip

## 3.5 Orifice 15° Quick-Disconnect Pressure Washer Spray Tip

### Key Features:

- Yellow 15° tip is great for use on concrete, brick, and other hard or porous surfaces with stubborn stains
- Connects directly to pressure washer wands with 1/4" quick-disconnect socket
- Quick-disconnect spray tips allow you the flexibility to select the specific spray tip pattern needed for your application



Model#	SKU#	Description
PWA014	10012317	Blushield #3.5 Nozzle 15° Quick-Disconnect Pressure Washer Spray Tip

## 3.5 Orifice 0° Quick-Disconnect Pressure Washer Spray Tip

### Key Features:

- Red 0° tip is ideal for cleaning or rinsing hard to reach areas crevices in sidewalks or driveways
- Connects directly to pressure washer wands with 1/4" quick-disconnect socket
- Quick-disconnect spray tips allow you the flexibility to select the specific spray tip pattern needed for your application



Model#	SKU#	Description
PWA015	10012318	Blushield #3.5 Nozzle 0° Quick-Disconnect Pressure Washer Spray Tip

## Male Metric Pressure Washer Adapter

### Key Features:

- Creates a connection between two female metric ends
- Heavy-duty plated steel or brass construction
- For use on guns, hoses, wands, and accessories
- Durable construction for pressure washer use



Model#	SKU#	Description
PWA016	10012319	Blushield Male Metric Pressure Washer Adapter





## Female Metric x 3/8" Quick-Disconnect Plug/Socket Pressure Washer Adapter Set

### Key Features:

- Converts male and female metric connections into 3/8" quick-disconnect connectors
- Adapters create a thread free connection between pump and hose
- Quick-disconnect feature allows for easy change out of accessories
- Durable construction for pressure washer use



Model#	SKU#	Description
PWA017	10012320	Blushield Female Metric x 3/8" Quick-Disconnect Plug/Socket Pressure Washer Adapter Set

## Quick-Disconnect Garden Hose Adapter Set

### Key Features:

- Allows quick and easy connection of garden hoses
- Heavy-duty brass construction for adapter durability
- Use to connect pressure washer supply, garden hoses, or accessories
- Quick-disconnect feature allows for easy change out of accessories



Model#	SKU#	Description
PWA018	10012321	Blushield Quick-Disconnect Garden Hose Adapter Set

## Cleaning Solution Siphon Hose & Filter

### Key Features:

- Used to siphon detergent out of a separate container
- For use with most brands of pressure washers
- Includes a filter to ensure no contaminants enter the pressure washer pump
- Help keep your pressure washer running at peak performance
- Genuine OEM replacement part



Model#	SKU#	Description
PWA019	10012322	Blushield Cleaning Solution Siphon Hose and Filter

## O-Ring Kit

### Key Features:

- Universal fit
- Compatible with most pressure washer accessories
- Replacement O-rings
- Reduced downtime
- Complete kit
- Ensures optimal performance



Model#	SKU#	Description
PWA019	10012322	Blushield Cleaning Solution Siphon Hose and Filter





# Lance Assembly 18" with Hi-Lo #3.5 x M22

Key Features:

- Simply twist for a full range of spray patterns from pin-point to wide fan (0 - 40 degrees)
- Easily adjust pressure from high to low for applying cleaning solutions
- For pressure washers up to 3,200 PSI
- Connects to M22 spray gun fittings 24.25 L x 4.50 W x 2.00 H



Model#	SKU#	Description
PWL001	10012324	Blushield Lance Assembly 18" with Hi-Lo #3.5 x M22

# 20" Lance Adjustable Spray Nozzle & Wand

Key Features:

- Adjustable spray nozzle and wand
- Up to 3000 PSI pressure washers and connects to M22 spray gun fittings
- Simply twist for a full range of spray patterns from pin-point to wide fan (0-40 degrees)
- Easily adjust from high to low for applying cleaning solutions
- Fits multiple brands



Model#	SKU#	Description
PWL002	10012325	Blushield 20" Lance Adjustable Spray Nozzle & Wand

# 3000 PSI Multi-Tip Adjustable Pressure Washer Wand

Key Features:

- Comes with 6-in-1 nozzle
- Easy one click spray selection switches between 0°, 15°, 40°, and 65° spray patterns
- 18" wand connects to most consumer pressure washer units
- Male metric wand inlet



Model#	SKU#	Description
PWL003	10012326	Blushield 3000 PSI Multi-Tip Adjustable Pressure Washer Wand

# 4000 PSI Easy-Lock Metric Quick-Disconnect Replacement Pressure Washer Wand

Key Features:

- Easy-lock quick-disconnect wand with lock down collar for quick, one-handed connections
- Provides an additional 20" length for high, hard to reach cleaning applications
- Quick-disconnect feature allows for quick, easy change outs of nozzles, tips, and other accessories
- Can be used as a replacement or extension wand



Model#	SKU#	Description
PWL004	10012327	Blushield 4000 PSI Easy-Lock Metric Quick-Disconnect Replacement Pressure Washer Wand





## 3000 PSI Metric Pressure Washer Gun

**Key Features:**

- For use with gas pressure washers
- Spray lance required; not included
- Inlet: M22 threaded male
- Outlet: M22 threaded female
- Maximum pressure: 3200 PSI
- Maximum flow: 8 GPM
- Maximum temperature: 200° F

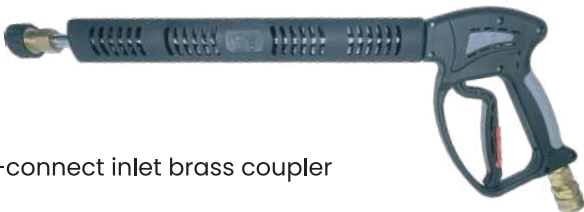


Model#	SKU#	Description
PWG001	10012328	Blushield 3000 PSI Metric Pressure Washer Gun

## Hot Water Pressure Washer Gun with Vented Lance — 5,000 PSI, 10 GPM, 16” Lance

**Key Features:**

- Vented design for hot water applications
- High-impact Zytel polymer cover
- Viton O-ring
- Chrome-plated lance with top M22 coupler and 3/8in. quick-connect inlet brass coupler
- Up to 5000 PSI at 300°F



Model#	SKU#	Description
PWG002	10012329	Blushield Hot Water Pressure Washer Gun with Vented Lance — 5,000 PSI, 10 GPM, 16” Lance

## Gun/Lance 3200psi M22xM22

**Key Features:**

- Trigger lock helps prevent accidental spraying
- For use with metric wands and accessories



Model#	SKU#	Description
PWG003	10012330	Blushield Gun/Lance 3200psi M22xM22

## High Pressure Gun

**Key Features:**

- Designed for powerful cleaning applications with strong water output.
- Supports operating pressure from 1000 to 4000 PSI, ideal for various cleaning tasks.
- Built to withstand temperatures ranging from 0°C to 40°C, ensuring safe use in typical conditions.
- Equipped with an automatic nozzle for convenient and efficient foam or water spray.



Model#	SKU#	Description
PWA035	10013683	High Pressure Gun





## Metal Brass Foam Gun High Pressure

**Key Features:**

- Comfortable grip handle and trigger for extended use without hand fatigue
- Made from durable solid brass for long-lasting performance and corrosion resistance
- Polished or coated surface for extra resistance to rust and weather elements
- Includes high-quality rubber gaskets and tight-sealing components to prevent leaks under pressure



Model#	SKU#	Description
PWA043	10013682	Metal Brass Foam Gun High Pressure

## 3/8" Quick Disconnect Male Plug x 3/8" Female Pipe Thread Pressure Washer Adapter

**Key Features:**

- Allows fast and easy connection or disconnection without tools, saving time during setup
- Made from durable materials like solid brass or stainless steel for long-lasting performance
- Ideal for pressure washers, foam guns, spray wands, and other cleaning equipment
- Standard size compatible with most pressure washer hoses and accessories



Model#	SKU#	Description
PWA062	10013743	3/8" Quick Disconnect Male Plug X 3/8" Female Pipe Thread Pressure Washer Adapter

## 3/8" Quick-Disconnect Socket X 3/8" FPT Pressure Washer Adapter

**Key Features:**

- Enables fast, secure attachment and removal of pressure washer accessories without the need for tools
- Female Pipe Thread end fits standard 3/8" male threaded fittings for easy integration with hoses or equipment
- Crafted for high-strength performance under frequent use in high-pressure cleaning environments
- Designed to perform well in outdoor settings and withstand exposure to detergents and cleaning agents



Model#	SKU#	Description
PWA055	10013679	3/8" Quick-Disconnect Socket X 3/8" FPT Pressure Washer Adapter

## 1/4" Quick-Disconnect Socket X 1/4" FPT Pressure Washer Adapter

**Key Features:**

- Allows for fast and secure attachment of spray wands, nozzles, and other accessories.
- Standard threading fits most 1/4" male connectors commonly used in pressure washer systems
- Ideal for tight spaces and handheld tools, offering ease of use without added bulk
- Made from high-quality materials like brass or stainless steel for long-term reliability
- Provides a tight seal to prevent water leakage even under high pressure



Model#	SKU#	Description
PWA043	10013682	Metal Brass Foam Gun High Pressure





# U-BLoX

The Blu Shield Union Block is engineered to supercharge your pressure washer system by doubling the water flow, delivering faster, deeper, and more efficient cleaning results. Constructed from heavy-duty stainless steel, it offers exceptional resistance to corrosion, wear, and extreme conditions, ensuring long-lasting durability and seamless integration with NPT fittings.

## Features

- Doubles water flow for maximum cleaning power.
- Flow Rate: Up to 10 GPM
- Working Pressure: 6,000 PSI | Burst Pressure: 24,000 PSI
- Tested 1.5x working pressure for reliability
- Fitting Type: NPT
- Material: Heavy-Duty Stainless Steel



Model#	SKU#	Description
UB3800	10013573	Union Block 3800 For 3/8" PW Hose Assemblies (RT-30-1)
UB3812	10013574	Union Block 3812 For 3/8" and 1/2" PW Hose Assemblies (RT-30-2)
UB1200	10013575	Union Block 1200 For 1/2" PW Hose Assemblies (RT-30-3)
TTPW3806-UB3800	10013576	Union Block 3800 Pressure Washing Connection Kit-(RT-30-1) Includes ToughTek 3/8"x 06'
TTPW3806-UB3812	10013577	Union Block 3812 Pressure Washing Connection Kit-(RT-30-2) Includes ToughTek 3/8"x 06'
TTPW1206-UB1200	10013578	Union Block 1200 Pressure Washing Connection Kit-(RT-30-3) Includes ToughTek 1/2"x 06'

# JRod Pressure Washer Nozzle



Blu Shield J-Rod Pressure Washer Nozzle Kit is engineered to elevate your cleaning efficiency and versatility. This all-in-one solution seamlessly integrates four precision-engineered nozzles into a single, easy-to-use holder, allowing for swift transitions between various spray patterns to tackle a wide range of cleaning tasks.

## Features

- 4-in-1 spray patterns in one nozzle.
- Universal 1/4" quick-connect fit.
- Heavy-duty stainless-steel build.
- Switch nozzles instantly, save time.
- Gentle on wood, siding, and roofing.
- Perfect for home, pro, and industrial use.



Model#	SKU#	Description
PWA042	10013726	JRod Pressure Washer Nozzle





# FUEL TRANSFER







### Fuel Transfer Hoses

Features

- 100% Nitrile Rubber Construction
- 1" MALE + FEMALE NPT Brass Fittings
- Reinforced with High-Tensile Polyester
- Braiding & Static Wire
- Designed for Heavy-Duty Diesel & Fuel Transfer Applications
- Oil, Abrasion & Ozone-Resistant Outer Jacket
- Static Dissipating for Safe Fuel Handling

Limited Lifetime Warranty

Flexible from -30°F to 180°F

Static Wire for Safe Fuel Transfer

Compatible with Diesel, Gasoline & Biofuels

Safe, High-Capacity Fuel Transfer

– Built for Agricultural and Industrial Demands

## Why Choose It?

- Built for heavy-duty fuel transfer, resists chemical wear
- 1" diameter delivers faster fills with less downtime
- Nitrile rubber core withstands diesel, gasoline, biodiesel
- Static wire ensures safety in combustible environments
- Braided reinforcement maintains shape under suction
- Trusted for agriculture, trucking, and construction use



Model#	SKU#	Description	I.D.	Length	Fittings
OSFH3412	10011097	Rubber Farm Fuel Transfer Hose with Static Wire	3/4"	12'	3/4" Male NPT
OSFH3414	10012131	Rubber Farm Fuel Transfer Hose with Static Wire	3/4"	14'	3/4" Male NPT
OSFH3420	10011098	Rubber Farm Fuel Transfer Hose with Static Wire	3/4"	20'	3/4" Male NPT
OSFHONE12	10011102	Rubber Farm Fuel Transfer Hose with Static Wire	1"	12'	1" Male NPT
OSFHONE14	10012132	Rubber Farm Fuel Transfer Hose with Static Wire	1"	14'	1" Male NPT
OSFHONE25	10012400	Rubber Farm Fuel Transfer Hose with Static Wire	1"	25'	1" Male NPT
OSFHONE30	10011104	Rubber Farm Fuel Transfer Hose with Static Wire	1"	30'	1" Male NPT

Twin Packs

OSFH3412-2pk	10015611	Rubber Farm Fuel Transfer Hose with Static Wire	3/4"	12'	3/4" Male NPT
OSFH3414-2pk	10015612	Rubber Farm Fuel Transfer Hose with Static Wire	3/4"	14'	3/4" Male NPT
OSFHONE12-2pk	10015613	Rubber Farm Fuel Transfer Hose with Static Wire	1"	12'	1" Male NPT
OSFHONE14-2pk	10015614	Rubber Farm Fuel Transfer Hose with Static Wire	1"	14'	1" Male NPT

## FAQs

**Q. How does integrated static wire improve safety during fuel transfer?**

A: The built-in static wire actively dissipates static electricity, protecting workers and equipment from sparks and reducing the risk of fire while refueling.

**Q. How does the 2X kink resistance benefit daily operations?**

A: The hose's reinforced design prevents kinks, keeping fuel flowing smoothly and reducing delays and interruptions on the jobsite.

**Q. Why is RMA Class A oil resistance important for maintenance crews?**

A: Its oil-resistant tube and cover comply with top industry standards, ensuring long-term durability and reliable performance when frequently exposed to fuels and oils.

**Q. What makes this hose ideal for cold weather and rugged farm environments?**

A: OilShield fuel hoses stay flexible down to 30°F and have ozone and abrasion-resistant construction, making fuel transfer fast and hassle-free even in harsh conditions.





# Auto- Retractable Fuel Transfer Hose Reels

OilShield Fuel Transfer Hose Reels deliver safe, efficient fuel handling with heavy-duty powder-coated 18-gauge steel. Designed with single or dual adjustable guide arms and a reinforced L-shaped base for stability. A 12-point ratchet spring secures hoses at any length, while precision-machined swivel joints prevent leaks and four rollers minimize hose wear.

### Features

- 18 Gauge powder-coated steel construction
- 12-point ratchet system which helps lock out on the hose at shorter lengths
- Specialized internal system reduces the spring vibration, enables quieter
- Includes Lead-in hose of relevant brand

### Mounting Options



## Single Arm Auto – Retractable Fuel Transfer Hose Reels

Model#	SKU#	Description	I.D.	Length	Fittings
OSFHR3425	10011105	OilShield 3/4" X 25' Rubber Fuel Transfer Hose Heavy Duty Single Arm Reel	3/4"	25'	3/4" Male NPT
OSFHR3435	10011106	OilShield 3/4" X 35' Rubber Fuel Transfer Hose Heavy Duty Single Arm Reel	3/4"	35'	3/4" Male NPT
OSFHR3450	10012142	OilShield 3/4" X 50' Rubber Fuel Transfer Hose Heavy Duty Single Arm Reel	3/4"	50'	3/4" Male NPT



## Dual Arm Auto – Retractable Fuel Transfer Hose Reels

Model#	SKU#	Description	I.D.	Length	Fittings
OSFHRNE30	10012403	OilShield 1" X 30' Rubber Fuel Transfer Hose Heavy Duty Dual Arm Reel	1"	30'	1" Male NPT
OSFHRNE40	10012712	OilShield 1" X 40' Rubber Fuel Transfer Hose Heavy Duty Dual Arm Reel	1"	40'	1" Male NPT





# Swivel Bracket 360 Degree Reel Mount

The BluBird Swivel Mount 360° is a robust floor-mounting solution for hose reels, engineered to deliver maximum flexibility and strength. Its full 360° swivel rotation ensures smooth hose access from any direction, making it perfect for workshops, garages, and industrial facilities. Built from powder-coated carbon steel, this heavy-duty mount is corrosion-resistant, vibration-tested, and designed to withstand demanding environments while keeping reels anchored securely in place.

### Features

- Full 360° swivel for easy multi-directional hose use
- Secure floor-mount design for stability and safety
- Heavy-duty carbon steel with powder-coated finish
- Corrosion- and temperature-resistant for tough environments
- Load- and vibration-tested for long-lasting performance



SCAN FOR VIDEO



Detach top plate from the bottom plate.



Place bottom plate on floor and mark holes.



Drill holes in floor.



Insert lag shields in holes and place bottom plate over the holes.



Use lag screws to attach bottom plate to the floor.



Attach top plate to the reel.



Attach top plate and reel to the bottom plate.

Model#

SKU#

Description

HRSB360

10013569

Swivel Bracket 360 Degree Reel Mount

# Swivel Mount 180 Degree DA Medium

The BluBird Swivel Mount 180° (Single Arm & Dual Arm) is a durable wall-mounting solution designed for flexible and secure hose reel installation. Its 180° swivel motion provides smooth side-to-side positioning, while the powder-coated steel build ensures strength and corrosion resistance. The Dual Arm version features a dual-bearing design for added stability under heavy loads, and both models include an integrated locking mechanism for safe, long-lasting use

### Features

- 180° swivel motion for flexible wall-mounted positioning
- Single Arm & Dual Arm options for different reel capacities
- Dual-bearing design (Dual Arm) for heavy-duty stability
- Powder-coated steel for strength & corrosion resistance
- Integrated safety lock with space-saving design



SCAN FOR VIDEO



Mark two holes on the wall for the base plate.



Secure the mounting plate with load-rated fasteners suitable for the wall and environment.



Attach the reel to the swivel arm and secure it with bolts.



Place the reel onto the mounted base plate.



Insert the swivel rod through the holes of the base plate and swivel arm plate.



Tighten the plate with the wing nut provided.



Your reel is now securely mounted on the wall.

Model#

SKU#

Description

HRS180

10012848

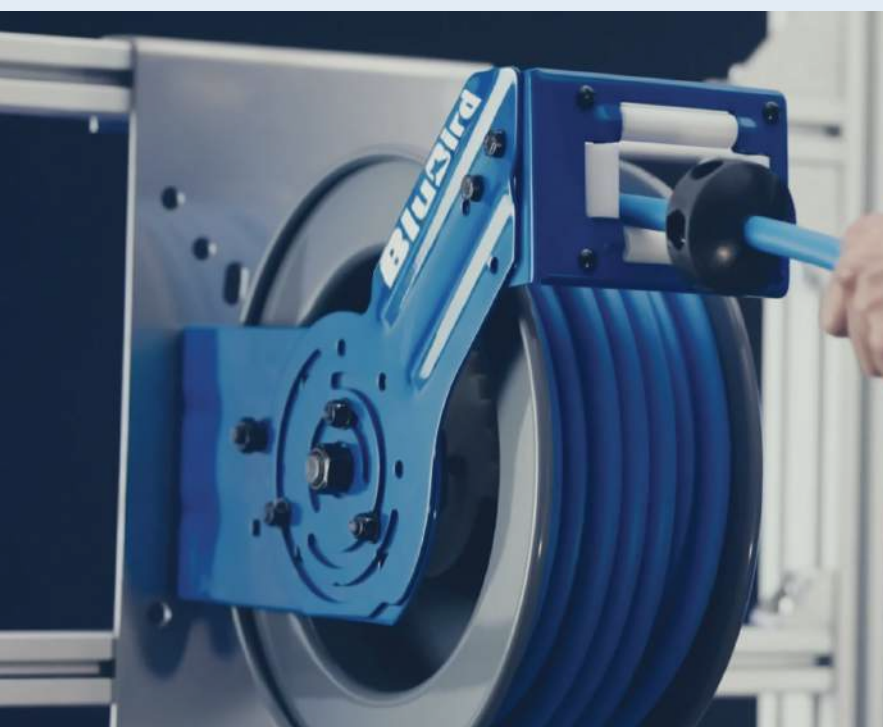
180° Hose Reel Swivel Mount

HRSDA180

10013506

Swivel Mount 180 Degree DA Medium





# MATERIAL HANDLING







# Non-Marking Vinyl Flexible Tie

The Rapid Tie Display Box is the perfect tool for product promotion and branding. Present your products in a creative way with this wing rack display, custom-sized to meet your needs. Perfect for retail locations, exhibitions, and events, it's a simple yet effective way to showcase and advertise products for impulse buying.

## Features

- UV resistant for longer outdoor life
- No violent recoil like rubber straps
- Easy to store and will not tangle other ropes
- Doesn't mark or stretchNo metal hooks
- Flexible from -60°F to 200°F
- Non-marking
- Easily links together

**Colors:** Green | Black | Yellow | Red



Model#	SKU#	Description
BBRT01-BK	10012067	Rapid tie 16" non marring adjustable extendable strap, patented, made in usa - 2 pack, black
BBRT01-GN	10012070	Rapid tie 16" non marring adjustable extendable strap, patented, made in usa - 2 pack
BBRT01-RD	10012068	Rapid tie 16" non marring adjustable extendable strap, patented, made in usa - 2 pack, red
BBRT01-YL	10012069	Rapid tie 16" non marring adjustable extendable strap, patented, made in usa - 2 pack, yellow
BBRTCDP-8-MX24	10012412	Rapid tie counter display box with 24 pairs of adjustable straps, mix color
BBRTDP-2-MX48	10012242	Rapid tie wing rack displayer with 48 mix pcs (6 color, 8 x pack of 2 each color)



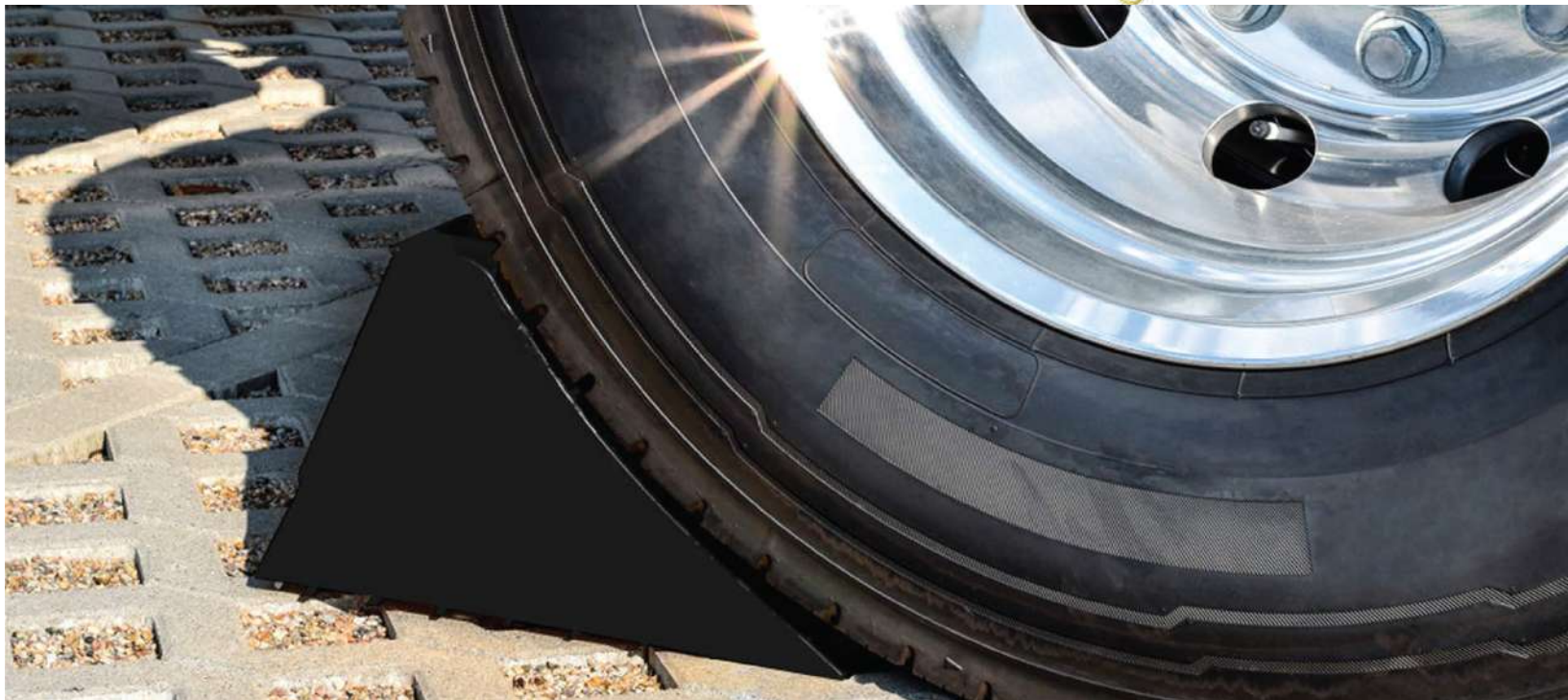


# Heavy-Duty Wheel Chocks

BluBird Industries’ Rubber Pyramid Chocks allow for fast and easy placement from either side of the tire. Made of heavy-duty rubber with non-slip ridges for a superior grip, these chock are UV-, oil-, salt-, and acid-resistant, making them ideal for use in situations with corrosive chemicals. With a wide variety to chose from, they provide increased stability and rigidity.

## Features

- Nonslip ridges for a firm grip
- UV-, oil-, salt- and acid-resistant for use in situations with corrosive chemicals
- Includes eyebolt & handles for easy carrying or to connect two chocks
- Wide base for increased stability and rigidity Heavy-duty rubber constructed wheel chock for lasting life



Model#	SKU#	Description
BBRWC01	10010530	Blubird Pyramid Wheel Chock with Eye-bolt
BBRWC02	10010531	Blubird Rubber Wheel Chock with Eye Bolt
BBRWC03	10010532	Blubird Rubber Wheel Chock with Handle
BBRWC04	10010533	Blubird Contured Wheel Chock with Eye Bolt
BBRWC07	10010536	Blubird 2-Pk. of Compact Wheel Chocks
BBRWC08	10013127	Rubber Wheel Chock - RWC08
RWC-KIT4	10015559	Four Brackets with Eight Fasteners
RWC-KIT8	10015560	Eight Brackets with Sixteen Fasteners
WCS01-KIT4	10015561	Four Bracket with Eight Fasteners and the Wheel Chock Removal Stick
WCS-01	10015562	Wheel Chock Removal Stick





# Aluminium Reel Stand – 4 Reels

Made of sturdy aluminum, this reel stand comes with four reel mounting options. This compact solution can make your workspace look more organized and tidy. It is a universal hose stand that can fit all kinds of reels and is an amalgamation of versatility and durability. If you believe that your workplaces are congested and you are sick of stumbling over tangled hoses or putting your reels in various places or positions, say yes to the best option in the market for storing and showcasing hose reels: the “Hose Reel Stand.” Hose reel stands are available in four- and six-reel models. You can add height extensions, additional reel extensions, or simply drop the tray to customize these stands to meet your needs.

## Features

- Available in 4 mounting options to fit your needs
- Universal design accommodates a variety of hose reels
- Sturdy construction from extruded aluminum and high-grade steel brackets
- Fade-proof finish that cleans to a shine with soap and water
- Customizable with height extensions, drip trays and more



- Easy Installation
- Display 4 Reels
- Durable, Fade-proof Finish
- Steel Constructed Display Trays
- Compact Design, Customizable With Accessories
- Ideal For Garages, Shops, and Display Stores

Model#	SKU#	Description
ALMSTD-4	10012913	Aluminium Reel Stand - 4 Reels





# Polyester Work Gear

Work Gear is our new line of Tool Bags and Pouches. These bags and pouches are tailor made to fit the needs of the professional as well as the do-it-yourself.

Polyester work gear consist of several pockets and also comes with padded or hard bottoms. Pockets can hold multitude of tools & accessories like drills, pilers, screwdrivers, wrench-sets and much more.

## Features

- Virtually “untearable” stitching
- Rubber foam and hard bottoms protect the bags from hard falls
- Adjustable compression pocket accepts bulky items
- Made with 600D polyester sewn together with heavy duty sticking for maximum durability.



## Tool Backpack with 48 pockets

### Description:

- H: 16" | W: 12" | D: 10"
- Pockets : 48 | Shoulder Strap Length: 38"
- Product weight : 4 lbs

Model#	SKU#	Description
BBTB01	10010547	BluBird Work Gear - Carpenters Tool Backpack - 48 Pockets, Padded Back Support-2



## Hard Bottom Tool Bag with 22 pockets

### Description:

- H: 10.5" | W: 12.5" | D: 7.5"
- Pockets : 21 | Shoulder Strap Length: 47"
- Product weight : 2.27 lbs

Model#	SKU#	Description
BBTB02	10010549	BluBird Work Gear - Large BigMouth Bag, 22 Pockets





## Large Hard Bottom Tool Bag with 31 pockets

### Description:

- H: 11" | W: 16" | D: 9.5"
- Pockets : 31 | Shoulder Strap Length: 47"
- Product weight : 3.03 lbs

**Model#**

**SKU#**

**Description**

BBTB03

10010551

BluBird Work Gear - Large BigMouth Bag, 31 Pockets



## Medium and Large Utility Tote Bag Combo

### Description:

- Medium = H: 5" | W: 12" | D: 4"
- Large = H: 5.5" | W: 14" | D: 5.5"
- Pockets : 1
- Product weight : 1.52 lbs

**Model#**

**SKU#**

**Description**

BBTB04

10010552

BluBird Work Gear - Medium and Large Utility Tote Bag Combo



## Multi pocket Tool Roll Organizer with 32 pockets

### Description:

- H: 14.5" | W: 27.5" | Pockets : 14
- Strap Length: 32"
- Product weight : 0.93 lbs

**Model#**

**SKU#**

**Description**

BBTB05

10010553

BluBird Work Gear - Multi Pocket Tool Roll Organizer with 32 pockets



## Hard Bottom Tool Bag with 22 pockets

### Description:

- H: 10.5" | W: 12.5" | D: 7.5"
- Pockets : 21 | Shoulder Strap Length: 47"
- Product weight : 2.27 lbs

**Model#**

**SKU#**

**Description**

BBTB07

10010555

BluBird Work Gear - Tool Pouch with 11 pockets





## Reel Spare Parts

BluBird Hose Reel Spare Parts are designed for quick replacement and long-lasting performance, keeping reels in peak working condition. Built from heavy-duty, corrosion-resistant materials, each part ensures durability in demanding environments. Precision-fit components maintain smooth operation and safety, while the rugged construction resists wear from oil, chemicals, and UV exposure. Easy-to-install designs reduce downtime and extend reel life. Available individually for flexible maintenance and repair needs.

### Features

- Roller plate assemblies for small, large & XL reels
- Fits single & dual-arm reels in 3/8", 1/2", 5/8" sizes
- Lock pawl & spring for smooth reel function
- Stoppers for 3/8", 1/2", 5/8" hoses, incl. XL reels
- Brass parts in NPT & GHT thread options
- Light & heavy-duty versions for all reel types
- Brass swivels up to 4100 PSI for PW reels
- OEM-quality spares for long life & easy fit



Model#

SKU#

Description

RPBS12

10012585

Brass Part 1/2" NPT For Hose Reel - Light Version

RPBS38

10012586

Brass Part 3/8" NPT For Hose Reel - Light Version

RPBS58

10012587

Brass Part GHT 3/4" Female x 3/4" Male For Hose Reel

RPBSDA12

10012588

Brass Part for Hose Reel - 1/2" F-NPT for Medium Dual Arm Reel - New

RPBSDA38

10012589

Brass Part for Hose Reel - 3/8" F-NPT for Medium Dual Arm Reel - New

RPBSDAL12

10012590

Brass Part 1/2" NPT- For 1/2" Hose Reel Milton (MT-2)

RPBSDAL38

10012591

Brass Part 3/8" F NPT X 1/2" M NPT

RPBSPW38

10012592

Brass Swivel 3/8" NPT-F 4100 PSI for PW Reels - Imp

RPBSPWDA38

10012593

Brass Swivel 3/8" NPT-F 4100 PSI -for manual-reel-GP

RSLP

10011526

Lock Pawl & Spring for All Reels

RSRPDA-BLUE

10011532

Roller Plate Assembly for Dual Arm Reel All Sizes -

RSRPDA-SS

10012594

Roller Plate Assembly for Dual Arm Reel - SS

RSRPL-BLUE

10011534

Roller Plate Assembly for 3/8" & 1/2" & 5/8" Large Reel -

RSRPL-SS

10012598

Roller Plate Assembly for 3/8" & 1/2" & 5/8" Large Reel - SS

RSRPLDA-BLACK

10012596

Roller Plate Assembly for 3/8" & 1/2" & 5/8" Large DA Reel

RSRPS-BLACK

10011536

Roller Plate Assembly for 3/8" & 1/2" Small Reel - Black

RSRPSTD-BLACK

10011538

Roller Plate Assembly for 3/8" & 1/2" STD & HD Black

RSRPSTD-BLUE

10011539

Roller Plate Assembly for 3/8" & 1/2" STD & HD

RSRPSTD-SS

10012599

Roller Plate Assembly for 3/8" & 1/2" STD - SS

RSRPXLDA-BLUE

10012600

Roller Plate Assembly for 3/8" & 1/2" & 5/8" XL DA Reel

RS09

10010591

Blubird Hose Reel Roller Guide Set

RSSTP12

10011543

Hose Reel Stopper for 1/2" Hose

RSSTP12-XL

10012601

Hose Reel Stopper 1/2" For- XL Hose Reel

RSSTP38

10011545

Hose Reel Stopper for 3/8" Hose

RSSTP38-XL

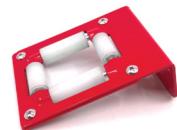
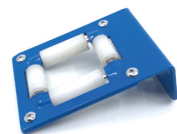
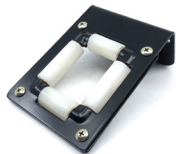
10012603

Hose Reel Stopper 3/8" For- XL Hose Reel

RSSTP58

10011546

Hose Reel Stopper for 5/8" Hose





**TOUGH**  **TEK**

**LIGHTEST, STRONGEST &  
MOST FLEXIBLE  
PRESSURE WASHER HOSE**



[www.blubirdindustries.com](http://www.blubirdindustries.com)



NOTES



A series of horizontal dashed lines spanning the width of the page, intended for handwritten notes.



NOTES



A series of horizontal dashed lines spanning the width of the page, intended for handwritten notes.





[www.blubirdindustries.com](http://www.blubirdindustries.com)